

## 1. General comments.

The manuscript discusses the extreme wave event that affected the Melilla coast and harbour between the 4<sup>th</sup> and 5<sup>th</sup> April 2022, with unprecedented impact. The observations collected by an offshore wave buoy and by a tide gauge installed inside the Melilla port are used to characterize the extreme wave events that affected the area from 2008 to 2022, to evaluate the impact of these events on the conditions inside the port of Melilla (separating IG wave motions and agitation due to wind waves) and to show the distinctive extreme nature of the April 2022 event when compared with the previous extreme events observed. Estimates of the return period for these events show the importance of retaining the April 2022 event in evaluation of return periods for the planning of coastal structures or harbour operations. A regional wave model (WAM based) for the Iberian area is used to detail the wave conditions at affecting the Melilla area on the 4<sup>th</sup> April 2022, at the peak of the storm. ERA5 reanalysis are used to characterize the meteorological conditions associated with the extreme wave events observed in the Melilla area from 2008 to 2022. A reanalysis dataset from a regional model (WAM-based) for the Mediterranean Sea, covering the period 1993-2022, is used to provide the long-term perspective of evolutions of wave conditions (in terms of significant wave height) in the Alborán Sea.

The central subject of the paper, the extreme events affecting the SW Mediterranean coast and its impacts on the harbour conditions, addresses relevant scientific and societal questions.

The manuscript title reflects the overall content of the paper, highlighting the focus on the extreme wave event that affected the Melilla harbour in April 2022.

The abstract does provide a concise and complete summary of the key questions focused, of the work developed in the paper and main results.

Given the scientific and societal relevance, the new data that is explored, the important integration between observations and modelling results, it is the opinion of the referee that the paper should be considered for publication after some improvements on the structuration, presentation of matters and discussion, as indicated in the detailed analysis below.

Many thanks to Reviewer-2 for the detailed review and the number of useful tips provided. Please find below a thorough point-by-point response with the hope of improving the quality of the document to make it acceptable for final publication.

It is worthwhile mentioning that we have fully (partially) accomplished 65 (1) from the 67 suggestions provided by Reviewer-2, which constitutes the 97%.

Just in case the Reviewer-2 is not familiarized with the 8th Ocean State Report initiative, we would like to clarify that it is characterized by some specific limitations in terms of length (up to 3000 words) and maximum number of figures (4).

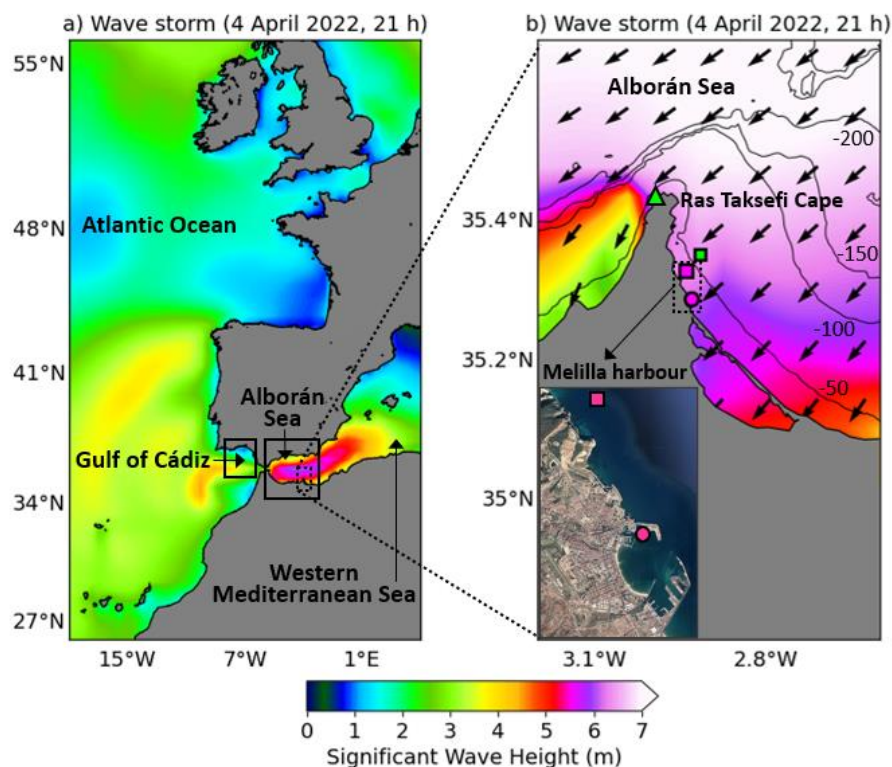
Finally, we would like to inform Reviewer-2 that the abstract has been rewritten to better clarify the main results derived from the study, following Reviewer-1 request ([comment 1] *“The abstract should be rewritten to provide a more comprehensive explanation of all the values presented by the authors”*).

## 1. Specific Comments

### 2.1 Text

[Comment 1] Lines 90-95: The regional WAM-based wave forecast system described in section 2.2 is used in figure 1.a to characterize the wave conditions offshore the Iberian Atlantic and Mediterranean areas and in figure 1.b to characterize the wave conditions that affected the Melilla area at 21:00 of 4 April 2022, during the peak of the storm. A more extensive use of the results from this model could have been conducted. The wave directions could be included in figure 1b, in this way illustrating eventual refraction effects that could be associated with the shelf topography in the Melilla area and that could, in some way, be relevant to interpret the offshore buoy measurements or the effects inside the harbour.

**100% accomplished.** A more extensive use of the model results has been conducted to characterize the wave conditions during the record-breaking storm. Wave directions have been included in Figure 1b as requested, along with the bathymetric contours.



We must point out that now Figure 1a is nowadays based on ERA-5 reanalysis outcomes (not on our wave forecast model) due to [Comment 4] from Reviewer-1: “Why is the “wave forecast model” of Puertos del Estado used? Would not it be more consistent to use the same database for atmospheric and oceanic variables (such as ERA5)?” Therefore, for consistency reasons, all those maps (of sea level pressure, wind at 10 m height and significant wave height) covering the regional domain (from Canary Islands to Ireland) are now based on ERA-5 reanalysis. Accordingly, our wave forecast model has been deleted from the table of products used (Table 1).

Figure 1b is nowadays based on MED reanalysis outcomes because: i) it has higher horizontal resolution than ERA-5 reanalysis (as shown in Table 2) so a larger amount of wave vectors can be plotted; ii) this reanalysis is forced with ERA-5 atmospheric fields, so the consistency is ensured.

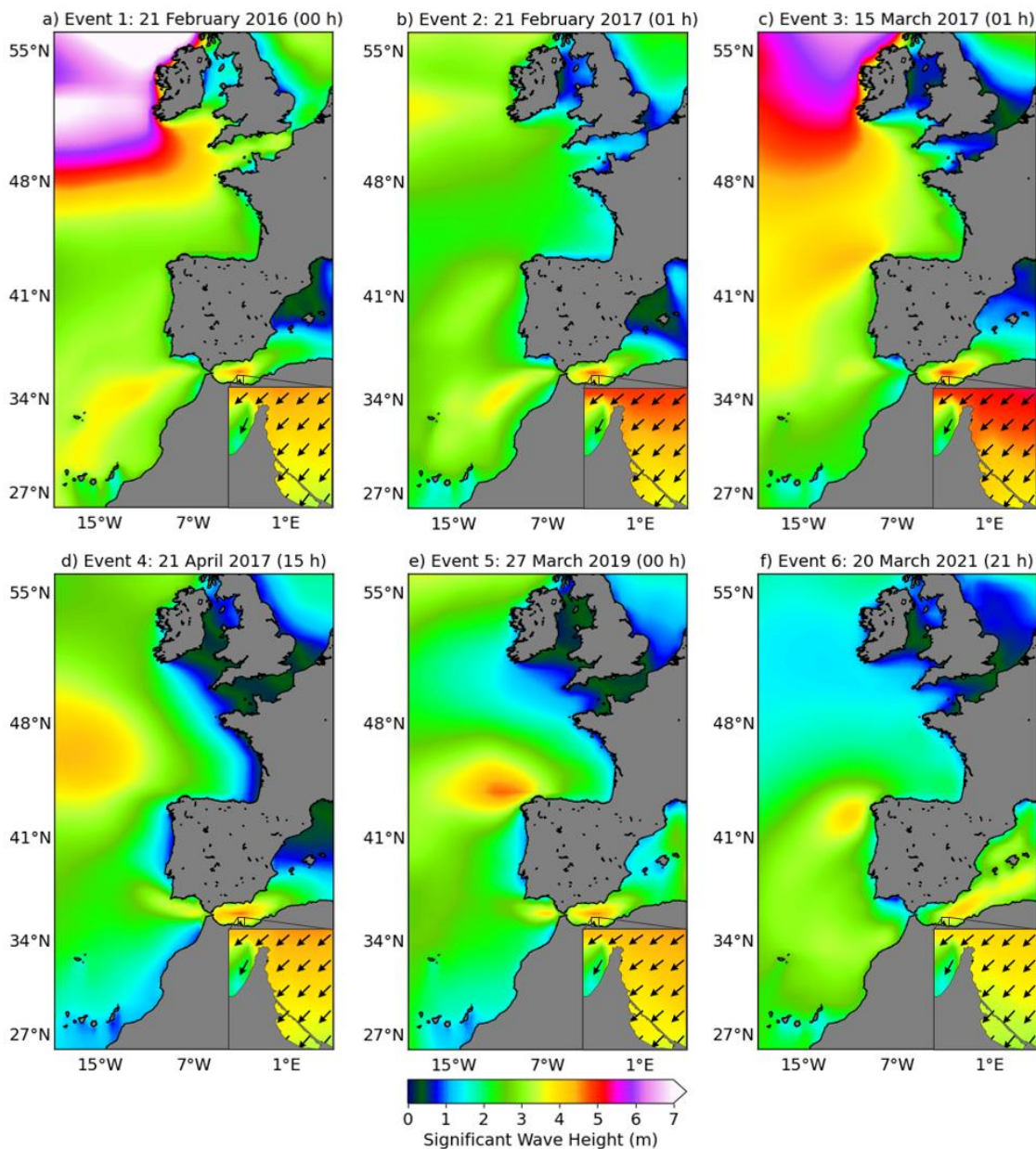
Finally, with regards to the wave direction, we must say that the MED reanalysis have a  $1/24^\circ$  horizontal resolution which, albeit significantly high, is still too coarse to accurately capture fine details at coastal/littoral scales such as refraction effects related to the shelf topography in the Melilla area.

Notwithstanding, the MED reanalysis (Figure 1b) agree in terms of wave direction with the information already provided by Melilla coastal buoy in Table 3 (mean incoming direction: 55° or in other words, propagation direction: 235°).

Within this context, in Conclusions section we already indicated the following: “future works should include the implementation of a dynamical downscaling methodology to improve wave reanalysis accuracy at finer coastal scales (Vannucchi et al., 2021). Of course, this would necessarily require finding the right trade-off between adequate spatial resolutions and the available in-house computational resources”.

[Comment 2] Also, if results from this model are available for the global period 2008-2022, they could be used to characterize the wave field in the area during the different extreme events that were observed, perhaps providing some relevant information regarding different impacts of these events on the area of the harbour.

**OK, 100% accomplished.** As previously indicated, we have replaced the wave maps from our model by outcomes from ERA-5 reanalysis (at regional scales) and MED reanalysis (around Melilla harbour).



The ERA-5 reanalysis dataset covers from 1940 so we plotted the significant wave height field for the 6 previous extreme events (new Annex 1, see above). As shown above, the visual resemblance between all these events is noticeable and share some common features, namely: the peak of wave height over the entire Alborán Sea. A secondary peak can be found at the westernmost part of the Strait of Gibraltar (over the Gulf of Cádiz) for E1, E2, E4 and E5 episodes, while E3 barely shows such a peak. In the case of E6 event, the peak over the Alborán Sea is not so high (around 4 m) and affected broader areas of the SW Mediterranean Sea.

Equally, the maps of SWH and wave propagation direction in the vicinity of Melilla harbour for the 6 extreme events (small maps exposed in the lower right corner of each panel) reveal that all of them shared pretty similar directional features.

[Comment 3] Line 94: Although readers can access the product documentation indicated in Table 1 it would facilitate the reading of the paper if indication of the geographical area covered by the model and of the spatial resolution of model outputs is provided.

**OK, 100% accomplished.** A new Table 2 has been introduced in the manuscript where columns 3 and 7 provide information about the models' spatial coverage and horizontal resolution, respectively.

[Comment 4] Line 101: The indication of the geographical position of the wave buoy would facilitate the reader.

**OK, 100% accomplished.** The geographical positions of both the coastal buoy and the tide-gauge are gathered in the new Table 2 (column 3). The position was not indicated explicitly in the main body of the manuscript (section 2) to avoid redundancies with Table 2.

[Comment 5] Lines 101-102: Radar tide gauge data was, apparently, available since October 2007. Could you justify why you have not extended the analysis of these measurements to the longer period 2008-2022, that could be consistent with the analysis of the offshore wave buoy?

**OK, 100% accomplished.**

Following also Reviewer-1's request ([Comment 3] "*The time span for the different datasets should be standardized*"), we have standardized instrumental datasets as shown in the new Table 2 with the aim of clarifying the situation:

- i) **1993-2022** is the time span for both the **regional MED wave reanalysis and ERA5 reanalysis**.
- ii) **2011-2022** is now the time span for **all in situ observational data** (from both the tide-gauge and the coastal buoy). Data section, Methodology section and diverse figures have been updated accordingly. In the new revised version of the manuscript, the time span employed and cited is always 2011-2022. The reason: the Datawell scalar buoy was replaced in April 2010 by a Triaxys buoy able to provide directional information, so we selected entire annual cycles from 2011 to 2022.

[Comment 6] Lines 97-102, Section 2.3 Tide Gauges: could you better describe here how the IG and agitation bands were defined from the 2-Hz data?

**OK, 100% accomplished.** A brief paragraph has been inserted into the new section 2.1.2 ("Melilla port tide-gauge") of the manuscript to better clarify this point. Raw 2-Hz data contain information of sea level oscillations with periods above 1 s, essentially capturing all sea surface height variability including waves, high-frequency sea level oscillations (HFSLO) and tides. HFSLO with periods between 30 s and 1 h were extracted from raw 2-Hz data by means of fit-for-purpose high- and low-pass digital filters, always trying to: (1) fix the width of the transition band from pass to stop as narrow as possible and (2) maximize the filter stability.

First, a subsampled time series with a cadence time of five minutes was created. This subsampled time series was used to obtain sea level oscillations with periods over 1 h using a 10<sup>th</sup>-order Chebyshev IIR low-pass filter with 1/3600 cut frequency (periods above 1 h). Then, wave agitation was obtained using an 8<sup>th</sup>-order Butterworth high-pass digital filter over the 2-Hz raw data with a cut frequency of 1/30 (periods below 30 s). Finally, the signal of HFSLO (with periods between 30 s and 1 h) was obtained by subtracting the two previous time series from the 2-Hz raw data signal. Further details can be found in the figure below:

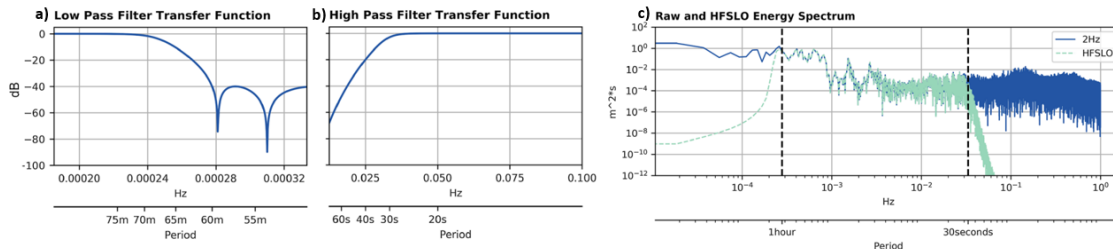


Figure extracted from García-Valdecasas et al (2021): a) Transfer function of the low-pass filter used to filter periods below 1 h; b) Transfer function of the high-pass filter used to obtain wave agitation; c) Comparison of raw data and filtered HFSLO energy spectrums.

Finally, a simplified four band energy spectrum was also calculated to facilitate the understanding of the energy distribution in the HFSLO band:

- 1) 30 s < T < 5 min (infragravity waves)
- 2) 5 min < T < 15 min
- 3) 15 min < T < 30 min
- 4) 30 min < T < 1 hour

[Comment 7] Line 129: "...for two different periods (a) 2010-2020 (before the record-breaking storm and (b) 2010-2022...". Why didn't you use the complete dataset that was available 2008-2022?

**OK, 100% accomplished.** Sorry, this was a typo. In the first version of the manuscript, the dataset covered from April 2008 to December 2022. As above indicated, we have standardized instrumental datasets: in the new version of the manuscript, 2011-2022 is the time span for all in situ observational data (from both the tide-gauge and the coastal buoy). Accordingly, the return periods were recomputed for 2011-2021 (before the record-breaking storm) and for 2011-2022 (after the record-breaking storm).

[Comment 8] Line 131: "...Three-Parameter Weibull...", assure consistency with nomenclature introduced below (here Three)

**OK, 100% accomplished.** "3-parameter Weibull distribution" has been replaced by "three-parameter Weibull distribution" along the entire document.

[Comment 9] Lines 137-138: Gaps linearly interpolated no matter the gap extension or did you used a limit time gap?

**OK, 100% accomplished.** Only small gaps (not larger than 6 h) in observational dataset were linearly interpolated. Already clarified in the manuscript.

[Comment 10] Lines 137-138: Should this paragraph be moved to section "2. Data", given that there you also provided some information regarding the use of tide gauge data to infer wave conditions inside the port?

**OK, 100% accomplished.** The paragraph has been moved to section 2.1.1

[Comment 11] Lines 141-143, equations (1),(2),(3) are the well know definitions of mean, standard deviation and correlation. Is it really necessary to introduce them here? Or could you just give a reference of a statistical or methods book/paper?

**OK, 100% accomplished.** The three equations have been replaced by a reference to Emery and Thompson (2001).

Reference:

Emery, W.J. and Thompson, R.E. *Data Analysis Methods in Physical Oceanography*, Elsevier Science, ISBN 9780080477008, 654 pages, Amsterdam, 2001.

[Comment 12] Line 147:

(a) "...the spectra of 2 Hz Sea level oscillations measured by the tide gauge revealed..." should become "...the spectra of 2 Hz sea level oscillations measured by the tide gauge (not shown) revealed...".

**OK, 100% accomplished.**

(b) Also, this phrase will fit better in section "4. Results". In the present section ("3. Methodology") it would be more relevant to mention that spectra of the 2 Hz data was built to identify energetic sea level variability inside the port, and in the following section ("4. Results", particularly on "4.4 Sea state inside the port") then to refer that the spectra revealed a high energy content in the IG band.

**OK, 100% accomplished.** The sentence was moved to section 4.4.

[Comment 13] Line 148-149: "As the IG energy in the nearshore has been documented to be positively correlated with offshore SWH... ". The phrase seems to suggest that in the two references indicated the IG energy measured by the Melilla port tide gauge was found to be positively correlated with the SWH measured by the offshore Melilla buoy, which is not the case. The two references indicated in the text focus on the nearshore (surf zone) areas of beaches with a large variety of conditions but are not including harbour areas.

**OK, 100% accomplished.** The paragraph has been reformulated in order to avoid any confusion.

[Comment 14] Line 150: "... a scatter plot was computed...". A scatter plot between what and what?

**OK, 100% accomplished.** The sentence has been reformulated to better clarify this point.

[Comment 15] Line 154: SWH was already defined as the significant wave height, but we are using this notation both for the SWH calculated from wave measurements and for the SWH obtained from models. Perhaps it could help the reader if this is distinguished. For example, in this line we are referring to SWH calculated from wave measurements while a few lines below (e.g., line 161) we are referring to SWH obtained from models. It could help readers if a distinction is made between significant wave heights obtained from observations collected by the wave buoy (noted, for example,  $SWH_o$ ) and significant wave heights obtained from models (noted, for example,  $SWH_m$ )

**OK, 100% accomplished.** The proposed notation for the significant wave height has been used along the entire manuscript (both text and figures):  $SWH_o$  for in situ observations and  $SWH_m$  for model estimations.

[Comment 16] Line 156:

(a) Equation (4), suggesting that IG height as runup is proportional to  $(SWH L)^{1/2}$  was proposed by Stockdon et al. (2006) (their equation 18). Inch et al. (2017) instead suggested that IG wave

height could be better predicted from offshore wells using the relation  $SWH_0^2 \cdot T_p$ , instead of the previous one.

**OK, 100% accomplished.** Corrected in the Methodology section. New outcomes derived from both approaches have been included in the Results section.

(b) The studies of Stockdon et al. (2006) and Inch et al. (2017) focus on IG motions near sloping beaches. Can you comment about the validity of using their results in an area such as the harbour of Melilla?

**OK, 100% accomplished.** Two paragraphs have been added to the manuscript:

“Significant efforts have been previously devoted to analysing the relationship between offshore wave parameters and IG wave energy, either at the shore (in the form of run-up) or in the nearshore area (surf zone). While Guza and Thornton (1982) found that the IG component of wave run-up increased linearly with increasing offshore  $SWH_0$ , Stockdon et al. (2006) concluded that the IG component scaled better with  $SWH_0 \cdot T_m^2$  and was actually independent of the foreshore slope. In the same line, Senechal et al. (2011) reported that IG wave run-up during extreme storm conditions was significantly less scatter when correlated with  $SWH_0 \cdot T_m^2$  than with  $SWH_0$  only. By contrast, Inch et al. (2017) reported that nearshore IG waves were best predicted using an offshore forcing parameter that is proportional to  $SWH_0^2 \cdot T_p$ . These contradictory findings reveal that further research on the subject is required and suggest that nearshore IG wave energy is unlikely a function of any single environmental factor (Lashley et al., 2020).

While the four aforementioned field studies focused on low-to-mild-sloping sandy beaches, in the present work (focused on harbours), a rough approximation approach based on two simplifications was adopted: i) local slope effects were not included, in line with Stockdon et al. (2006); ii) IG wave energy registered at Melilla tide gauge was scaled with  $SWH_0$ ,  $SWH_0 \cdot T_m^2$  and  $SWH_0 \cdot T_p^2$  although the former dataset is affected by wave–structure interaction processes (diffraction and reflection, to name the main ones) which are not so relevant in sandy beaches.”

References:

Guza, R. T., and Thornton, E. B.: Swash oscillations on a natural beach, *Journal of Geophysical Research: Oceans*, 87(C1), 483-491, 1982.

Inch, K., Davidson, M., Masselink, G. and Russell, P.: Observations of nearshore infragravity wave dynamics under high energy swell and wind-wave conditions, *Continental Shelf Research*, 138, 19-31, doi:10.1016/j.csr.2017.02.010, 2017.

Senechal, N., G. Coco, K. R. Bryan, and R. A. Holman: Wave runup during extreme storm conditions, *J. Geophys. Res.*, 116, C07032, doi:10.1029/2010JC006819, 2011.

Stockdon, H.F., Holman, R.A., Howd, P.A. and Sallenger Jr, A.H.: Empirical parameterization of setup, swash and runup. *Coast. Eng.*, 53, 573–588, 2006.

[Comment 17] Line 158: In the work of Stockdon et al. (2006) the experimental conditions presented waves not exceeding more than 3.5m. In that case, the measurements from an offshore buoy located over the bathymetric of 20m could be used as characterizing the waves in deep water. In the present work, the focus is on extreme events, with waves with heights exceeding 6 or 7m. In this case, can you justify that measurements from a buoy deployed a 14m depth can indeed be used as representative of waves propagating in deep water and, particularly, that the deep-water limit of the dispersion relation that is used in equation (5) can indeed be used to calculate the wavelength in equation (4)?

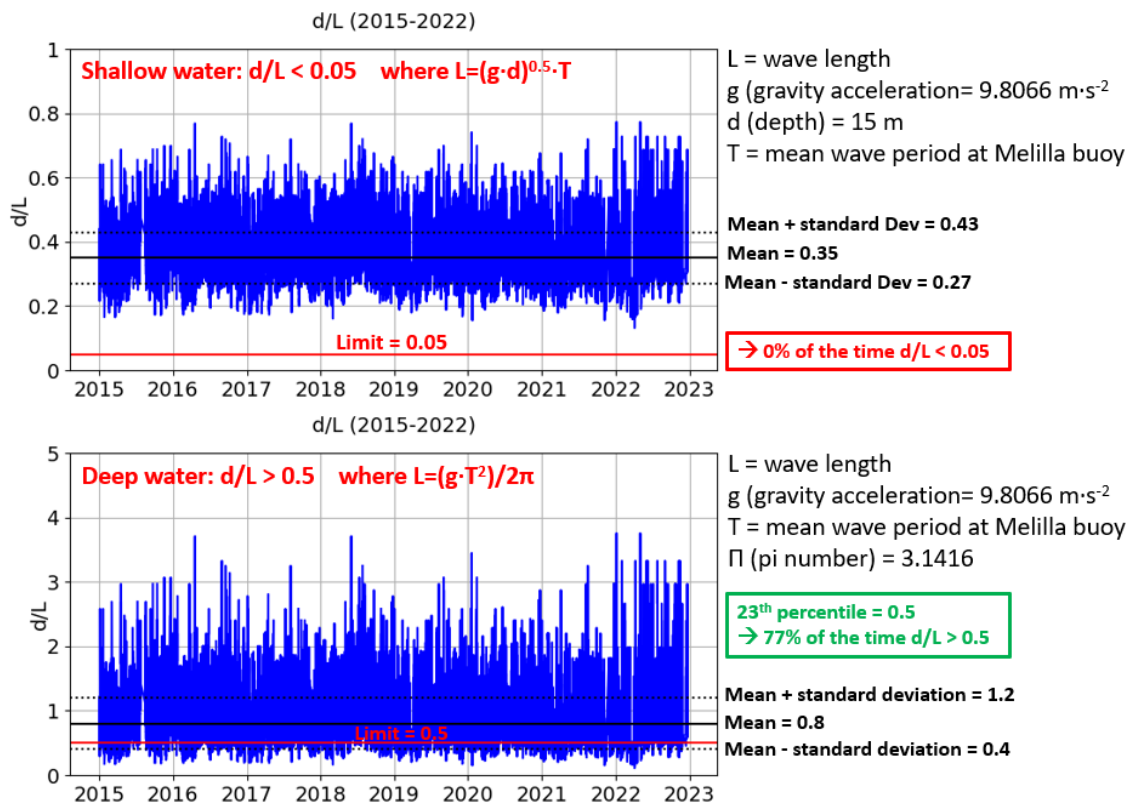
**OK, 100% accomplished.** Yes, we can justify the use of equation [5] which represents the wave length (L) in deep waters. Firstly, we would like to clarify that:

- Melilla buoy is moored at d=15 m depth (not 14 m).
- In the work of Stockdon et al. (2006), Hs and T were recorded hourly at a Waverider buoy located in ~18 m of water (Section 3.3 “Field experiments” in page 577). It is the depth of the different sites selected (to conduct the comparisons) which varied between 7 and 20 m (section 3.2 “Environmental parameters” in page 576).
- Respect the wave climate at Melilla buoy, the 98<sup>th</sup> percentile of significant wave height for 2011-2022 is set to 2.6 m.

There are 3 different ways of computing L depending on the type of wave, which in turn is defined by the value of the relative depth d/L :

Relative Depth d/L	wave type	wave celerity	wave length
$d/L < .05$	shallow water wave	$\sqrt{gd}$	$\sqrt{gd}T$
$.05 < d/L < .50$	intermediate depth wave	$\sqrt{\frac{gL}{2\pi} \tanh\left(2\pi\frac{d}{L}\right)}$	$\frac{gT^2}{2\pi} \tanh\left(2\pi\frac{d}{L}\right)$
$d/L > .50$	deep water wave	$\sqrt{\frac{gL}{2\pi}}$	$\frac{gT^2}{2\pi}$

We have computed the relative depth d/L for shallow waters and deep waters using the mean wave period (T) provided by Melilla coastal buoy:





As it can be observed, assuming the shallow water equation for the wave length we get a time series for the relative depth (top) characterized by a mean of 0.35 and a standard deviation of 0.08. The premise  $d/L < 0.05$  is never fulfilled for the 8-year period here analysed (2015-2022). Conversely, if we assume the deep-water equation for the wave length, we get a  $d/L$  time series where the mean value is 0.8, the standard deviation is 0.4 and the premise  $d/L > 0.05$  is fulfilled the 77% of the time for the period 2015-2022. The remaining 23% corresponds to  $d/L$  values below 0.5 and above 0.05 (i.e., intermediate depth water). Therefore, the deep-water wavelength approximation is broadly valid. A brief sentence has been added in Section 3 (Methodology) to shed light on this point.

[Comment 18] Line 172-179: The extreme events analysis is developed here in terms of SWH but can you also indicate the values of maximum wave height measured by the wave buoy offshore during the extreme storms?

**OK, 100% accomplished.** Values of maximum wave height have been added to the new Table 3. Furthermore, time series of maximum wave height has been also added to Figure 1d.

[Comment 19] Line 173: "... and derived from a long-term time series...", perhaps change to "... and derived from a long-term (14 years) time series..." to become clearer when the term "long-term mean and extreme wave climate" is latter use to refer model results for the 1993 to 2022 period.

**OK, 100% accomplished.** Replaced by "derived from a long-term (2011-2022) time series provided by a Melilla coastal buoy", since the time span for observational datasets was standardized according to Reviewer-1's request.

[Comment 20] Lines 173-174: "and derived from a long-term time series provided by a Melilla coastal buoy (Figure 1, b-c)...". The long-term time series that is referred in the text is presented in figure 1d so this should be indicated in the text.

**OK, 100% accomplished.** Replaced by "(Figure 1, d)".

[Comment 21] Line 174: "... was abruptly exceed during 42 hours." The duration of the extreme conditions above P99 is an important aspect but the reader cannot derive it from the presented tables or pictures. This could be included as an additional column in the table that reports the main characteristics of the 7 extreme events presented in the offshore buoy time series (table inserted in figure 1). This table could be moved to the "Table" section, allowing that more information could be added.

**OK, 100% accomplished.** A new Table 3 inserted in the manuscript with additional information.

[Comment 22] Lines 175: "... Coincident with a maximum value of the mean wave period (9.42s) ..." these are results that are presented in figures 1d,e and so the reference to these figures should be included here.

**OK, 100% accomplished.** The reference "(Figure 1, d-e)" was included at the end of the sentence.

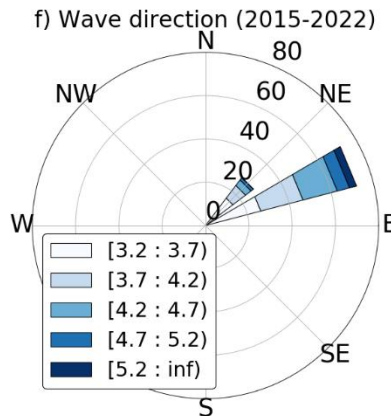
[Comment 23] Line 180: "... were NE ... ". To be consistent, please include the angular sector for NE as you have done for NE-E

**OK, 100% accomplished.** Indeed, in the sentence "the prevailing incoming wave directions were NE and NE-E ( $58 \pm 37^\circ$ )", the angular sector ( $58 \pm 37^\circ$ ) represents the mean direction + standard deviation for the entire dataset, not the angular sector associated with NE-E. In order to avoid any misunderstanding, the sentence has been rephrased as follows:

"the prevailing incoming wave directions during the 12-year period 2011-2022 were NE and NE-E, with an associated mean value of  $58^\circ \pm 37^\circ$ ."

[Comment 24] Line 183: It would be interesting if you could include some information regarding how the direction of the extreme events compares with the prevailing incoming wave directions for the period 2011-2022.

**OK, 100% accomplished.** A new wave rose has been plotted (Figure 1f) where only SWH values above the 99<sup>th</sup> percentile (3.2 m) have been taken into account (see below). As it can be deduced, the prevailing incoming sector for the most extreme SWH events is NE-E (72%), while the remaining 28% correspond to the NE sector. A brief sentence has been included in the manuscript.



**\*Note: this figure has been updated for the next version of the manuscript and now covers the entire period 2011-2022 (not 2015-2022).**

[Comment 25] Lines 185-188: The description of how the return periods was calculated would be better located in section 3 (Methodology), in the text block dedicated to the return period associated with the extreme episodes (starting on line 123). Here

**OK, 100% accomplished.** That piece of text has been moved to section 3.

[Comment 26] Line 192: "...3-parameter Weibull probability..." assure consistency with nomenclature introduced above (e.g., in line 131)

**OK, 100% accomplished.** "3-parameter Weibull distribution" has been replaced by "three-parameter Weibull distribution" along the entire document.

[Comment 27] Lines 188-194: This text include the results for the return periods that are associated to each one of the 7 extreme events indicated in the table that is inserted in figure1. These results are not presented in Table 5, which presents the return periods for different classes of SWH (3m, 4m ..., 8m). It would be useful for the reader that the return periods calculated for each of the 7 extreme events could appear as a separated column in the table inserted in figure 1.

**OK, 100% accomplished.** The return period for each of the seven extreme events are shown now in Table 4. We tried to gather all this information in a column of the new Table 3, as suggested by Reviewer-2, but there is not enough space. Please accept our apologies.

[Comment 28] Line 201: Should you use SI units consistently along the text (in this case,  $2 \times 10^3$  Pa/m)? In some parts of the text the atmospheric pressure is reported in hPa, here differences in atmospheric pressure appear in Pa.

**OK, 100% accomplished.** We have checked the validity of the units used in the manuscript.

We would like to clarify that, although the Pascal is the standard SI unit for pressure, the Hectopascal is broadly accepted **as SI-derived unit** for measuring atmospheric or barometric

pressure. In particular, we could find the following paragraph in “State of the Planet” journal website:

“Units: for units of physical quantities, the metric system is mandatory and, wherever possible, SI units should be used. **Hereby, we differentiate between SI base units, SI-accepted units, and SI-derived units.** Regarding the abbreviation of such units, SI base units and SI-accepted units must be abbreviated in conjunction with numbers (e.g. the velocity is 10 km h<sup>-1</sup>) and must be written out without numbers (e.g. the velocity is given in kilometres per hour). SI-derived units must also be written out when they do not contain a number. **If they contain numbers, the abbreviation is preferred where possible (e.g. the average atmospheric pressure is 1013 hPa)**, but authors can decide not to abbreviate them if no abbreviation is commonly used (e.g. the distance is 237 nautical miles). Regarding the notation, if units of physical quantities are in the denominator, contain numbers, and are abbreviated, they must be formatted with negative exponents (e.g. 10 km h<sup>-1</sup> instead of 10 km/h).”

Further details can be found at: <https://www.state-of-the-planet.net/submission.html#math>

[Comment 29] Lines 208-209: “... where easterlies blew persistently...”, could you in some way quantify what you mean persistently (how many days?) and if this persistence is similar for the different events or not?

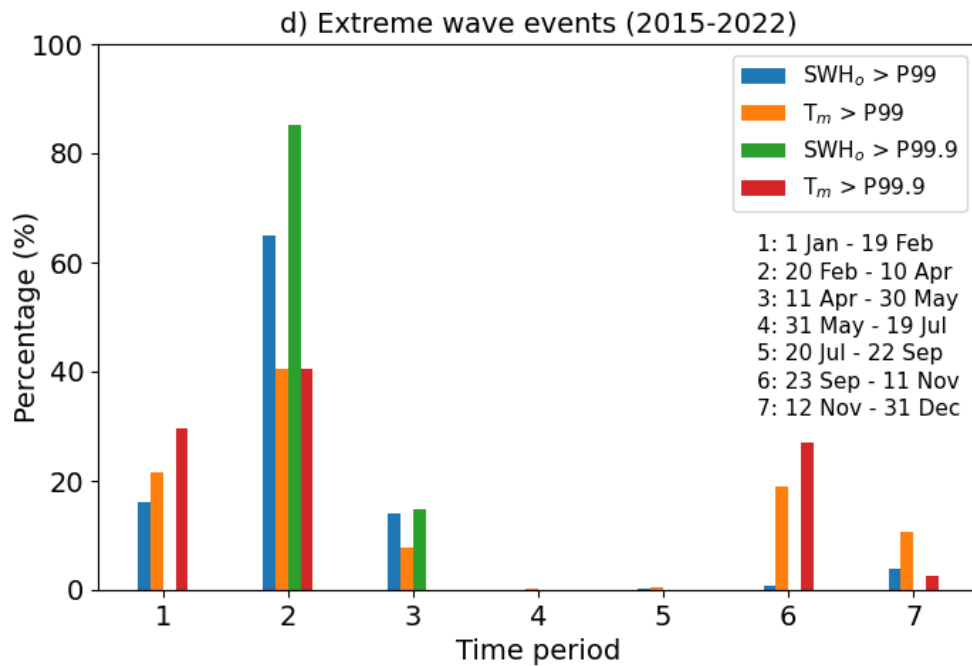
**OK, 100% accomplished.** Since Melilla coastal buoy and Melilla tide-gauge do not have wind sensor, we could not quantitatively quantify the persistence. However, the persistence of strong winds can be indirectly estimated from the number of hours that SWH<sub>0</sub> registered at Melilla coastal buoy was above the 99<sup>th</sup> percentile. Since this information is now available in the new Table 3 (following the Reviewer-2’s suggestion), we have rephrased the sentence in the following way:

“ii) a peak of wind speed over the entire Alborán Sea, where easterlies blew persistently along both sides of the Strait of Gibraltar (Annex 2). Only the event E6 showed a slightly different structure (Annex 2, f), with moderately strong winds blowing from the NE and only affecting the NW Mediterranean Sea” has been replaced by:

“ii) a peak of wind speed over the entire Alborán Sea, where easterlies blew strongly along both sides of the Strait of Gibraltar (Annex 2). Only the event E6 showed a slightly different structure (Annex 2, f), with moderately strong winds blowing from the NE and only affecting the NW Mediterranean Sea. In terms of persistence, intense winds steadily affected the study area for 1-2.5 days, except in the case of E1 and E6 events where the duration was shorter (14-16 h), as derived indirectly from the time that the SWH<sub>0</sub> continuously exceeded the P99 (Table 3).”

[Comment 30] Lines 211-212: “... a 6-week period between late February and early April (Figure 1, d).” This is only evident in the table inserted in figure 1 and not in figure 1d.

**OK, 100% accomplished.** A new panel has been added to Figure 2 where the temporal distribution of extreme wave events for 7 different time periods is exhibited. All the time periods selected were evenly distributed (50-day length) except period 6 that is 65-day length. It seems quite clear that the vast majority of wave episodes with SWH and mean period above P99 took place during Period 2, comprised between 20 February and 10 April.



**\*Note: this figure has been updated for the next version of the manuscript and now covers the entire period 2011-2022 (not 2015-2022).**

The sentence has been rephrased: “Furthermore, this common atmospheric configuration seems to predominantly feature during the same stage of the year, a 50-day period between late February and early April (Figure 2d)”.

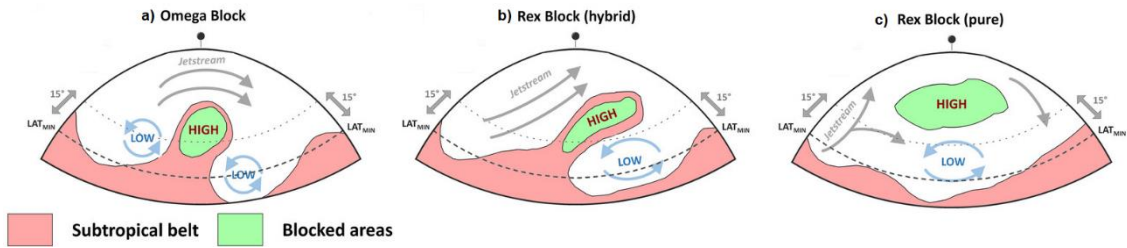
[Comment 31] Line 214: And why is that? What are the conditions leading to the development of the low-pressure system over N Africa and the high latitude position of the Azores High? Relation with winter regimes (e.g., North Atlantic Oscillation winter)? – This could be brought to the discussion/conclusion section

**OK, 100% accomplished.** A paragraph has been added to 4. Results section and also in 5. Conclusions section (related to [Comment 52] from Reviewer-2). Please, find below a comprehensive explanation:

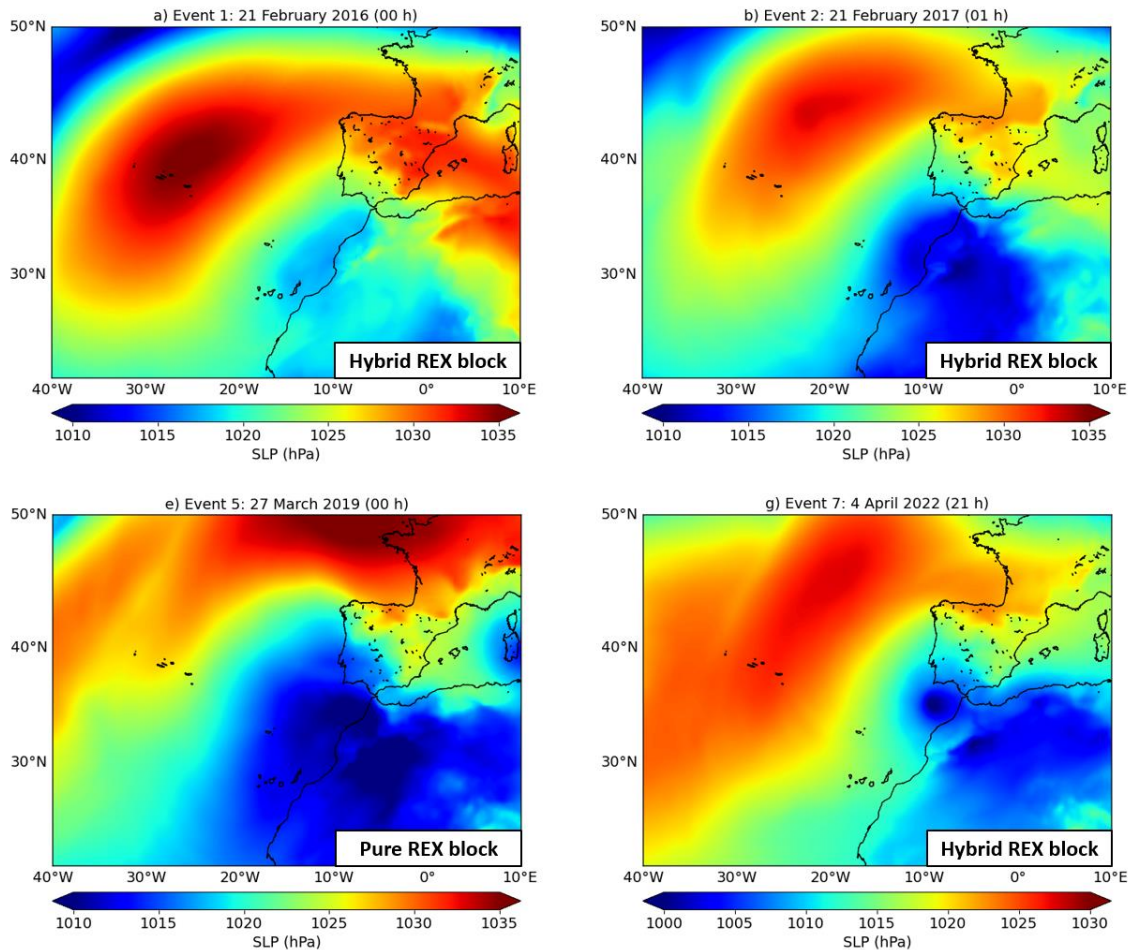
Some weather extremes occurring in Europe have been connected with a particular atmospheric flow pattern, known as atmospheric blocking. Blocking episodes have been long acknowledged as a large-scale disturbance (high-pressure systems at the surface) that persist for a long period of time in the middle and high latitude flows (Lupo, 2021). Depending on their location, long-lasting blocking systems also may lead to a shift in the storm track, which influences the occurrence of wind and precipitation anomalies in Europe. Due to these multifaceted linkages, compound events are often observed in conjunction with blocking conditions (Kautz et al., 2021).

There are 3 main types of atmospheric blocks affecting western Europe, as shown in the figure below (extracted from Sousa et al., 2021):

- The Omega block: a relatively widespread high-pressure area is observed between the midlatitudes and the subtropics, with low pressure systems on its western and eastern flanks (Figure 1a).
- The “hybrid” Rex block: during the transition from an Omega to a Rex (pure) shape, the blocking can temporarily exhibit “mixed” patterns (Figure 1b).
- The “canonical” Rex block: a north–south dipole pattern characterized by two adjacent (northern) high and (southern) low pressure systems in upper atmospheric levels (Rex, 1950).



Served as example, we have plotted again the sea level pressure maps for some specific extreme events but expanding the spatial coverage westwards. As it can be observed, E1, E2 and E7 correspond to hybrid REX patterns, while E5 event seems to be closer to the pure Rex shape with a clear north–south dipole. E3, E4 and E6 (not shown) appear to resemble, to some extent, an omega block, whereas E4 and E6 (not shown).



In general, blockings in the Northern Hemisphere tend to occur more frequently in winter and spring than in the other seasons. Particularly, eastern North Atlantic blocks are more common in the period from winter to spring (Kautz et al., 2022), in line with previous blocking climatologies (Barriopedro et al., 2006). Previous works have explored the dynamical links between blocking and the North Atlantic Oscillation (NAO), which is the leading mode of atmospheric circulation variability over the Euro-Atlantic sector and is characterized by a seesaw of atmospheric mass

between the Iceland Low and the Azores High (e.g., Hurrell and Deser 2009). The NAO appeared as the leading variability pattern during winter, accounting for the 45% of the blocking frequency variance (Barriopedro et al., 2006).

#### References:

- Barriopedro, D., R. García-Herrera, A. R. Lupo, and E. Hernández, 2006: A climatology of Northern Hemisphere blocking. *J. Climate*, 19, 1042–1063, <https://doi.org/10.1175/JCLI3678.1>
- Hurrell, J.W. and Deser, C. North Atlantic climate variability: The role of the North Atlantic Oscillation. *J. Mar. Syst.* 78: 28–41. doi: 10.1016/j.jmarsys.2009.11.002, 2009.
- Kautz, L.A., Martius, O., Pfahl, S., Pinto, J.G., Ramos, A.M., Sousa, P.M. and Woollings, T. Atmospheric blocking and weather extremes over the Euro-Atlantic sector – a review. *Weather Clim. Dynam.*, 3, 305–336, doi:10.5194/wcd-3-305-2022, 2022.
- Lupo AR. Atmospheric blocking events: a review. *Ann N Y Acad Sci.* 2021 Nov;1504(1):5-24. doi: 10.1111/nyas.14557. Epub 2020 Dec 31. PMID: 33382135.
- Rex, D. F. (1950). Blocking action in the middle troposphere and its effect upon regional climate. *Tellus* 2, 275–301. doi: 10.1111/j.2153-3490.1950.tb00339.x
- Sousa, P. M., D. Barriopedro, R. García-Herrera, T. Woollings, and R. M. Trigo: A New Combined Detection Algorithm for Blocking and Subtropical Ridges. *J. Climate*, 34, 7735–7758, doi:10.1175/JCLI-D-20-0658.1, 2021.
- Woollings, T., Hannachi, A. and Hoskins, B. Variability of the North Atlantic eddy-driven jet stream. *Quarterly Journal of the Royal Meteorological Society* 136 (649): 856-868. doi: 10.1002/qj.625, 2010.

[Comment 32] Lines 215-216: This statement is not correct as can readily be seen comparing figure 2-a (event 7) with Annex1- a (events E1). Both figures show a comparable distance between the atmospheric pressure centres (perhaps event shorter for event E1) but very different SLP values associated with these centres. It is the (atmospheric) pressure gradient, or SLP gradient, that was the relevant aspect in having a much stronger wind fields (and wave generation mechanism) in E7 by regard to E1. Note that in lines 222-224, when you describe the E1 event, you are stating that the relevant factor is the SLP gradient and not the separation between the two main pressure systems.

**OK, 100% accomplished.** The sentence has been rephrased to accurately describe what is shown in Figure 2a: “The primary **factors** that triggered the record-breaking wave storm (E7 event) **were** the short distance (1400 km) between the two main pressure systems **along with** the relatively deep (below 1000 hPa) system of low pressures over the Gulf of Cádiz (Figure 2, a-b)”.

[Comment 33] Lines 217: “...leading to very strong, persistent easterlies...”, how long is “persistent” here? Can you provide a quantification (how many days?)

**OK, 100% accomplished.** As later exposed in that paragraph, we can provide an indirect quantification: almost two days, as the 99<sup>th</sup> percentile of SWH<sub>0</sub> was exceeded during 37 consecutive hours. Indeed, this could only happen if strong winds blow persistently. Since there was no wind sensor in the study area, we could not quantify the persistence directly.

In order to better clarify this point, the sentence has been reformulated.

[Comment 34] Line 219: “... was abruptly exceeded during 42 consecutive hours (Figure 1, d)”. We cannot infer from Figure 1, d, how long did SWH was above P99. Perhaps better: “... was abruptly exceeded (Figure 1, d) during 42 consecutive hours.”.

**OK, 100% accomplished.** The sentence has been reformulated.

[Comment 35] Lines 220-221: SLP gradient units and consistency with SI units along the text, if required.

**OK, 100% accomplished.** According to the journal's guidelines, it is correct.

[Comment 36] Line 232: "According to the spectra content of 2Hz data ..." change to "According to the spectra content of 2Hz data (not shown) ..."

**OK, 100% accomplished.**

[Comment 37] Lines 232-233: As is mentioned in the caption and label of Figure 3, this figure presents the hourly time series of maximum sea level height in the IG band. So what is the sense of referring that "these oscillations are highly dominated by the IG band energy during the events."? I guess that what you are saying is that the spectra of 2Hz data show that port variability, during those extreme events, is dominated by the IG band? Rephrase this paragraph so that this becomes clearer.

**OK, 100% accomplished.** The sentence has been rephrased as follows:

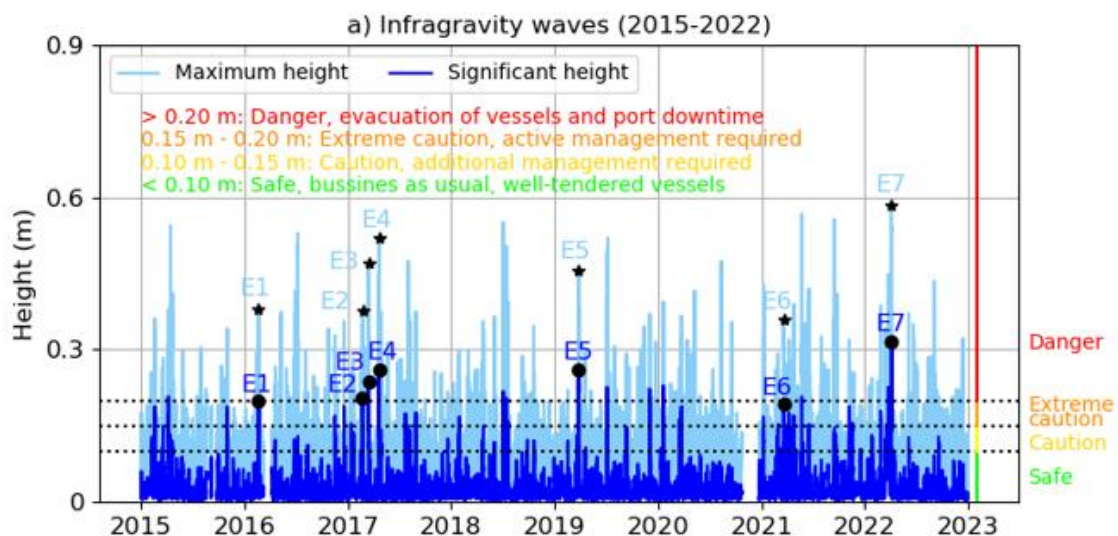
"According to the spectra content of 2 Hz data (not shown), the sea level variability within the port is highly dominated by the IG band energy during the analysed events."

[Comment 38] Lines 235-236: "... records of sea level oscillations (30s-1h) height..." should be changed to "... records of sea level height oscillations (30s-1h)..."

**OK, 100% accomplished.**

[Comment 39] Lines 235-238: These two paragraphs are confuse. It is not from Table 6 that we see that sea level height oscillations are below or above this or that level. This is derived from the analysis of Figure 3a and this figure is not indicated in the text. Table 6 is providing the framework that relates these observations with the thresholds used to guide port management.

**OK, 100% accomplished.** Apologies for the confusion. The paragraph referred to the IG significant height (which were not shown in the first version of the manuscript), while Figure 3a was showing IG maximum height. Now both parameters are exposed in Figure 3a (see below), following Reviewer1's suggestion ("It is not possible to see all these results in Table 6. Could you display them graphically?"). Furthermore, since the thresholds for port management are also indicated in this panel, Table 6 has been removed from the document to make easier for the reader to follow the narrative.



**\*Note: this figure has been updated for the next version of the manuscript and now covers the entire period 2011-2022.**

[Comment 40] Line 243: "...the analysis of 20-m timeseries of agitation..." should be corrected to "...the analysis of 20 min averaged time series of agitation..."

**OK, 100% accomplished:** "The analysis of 20 minute averaged time series of agitation".

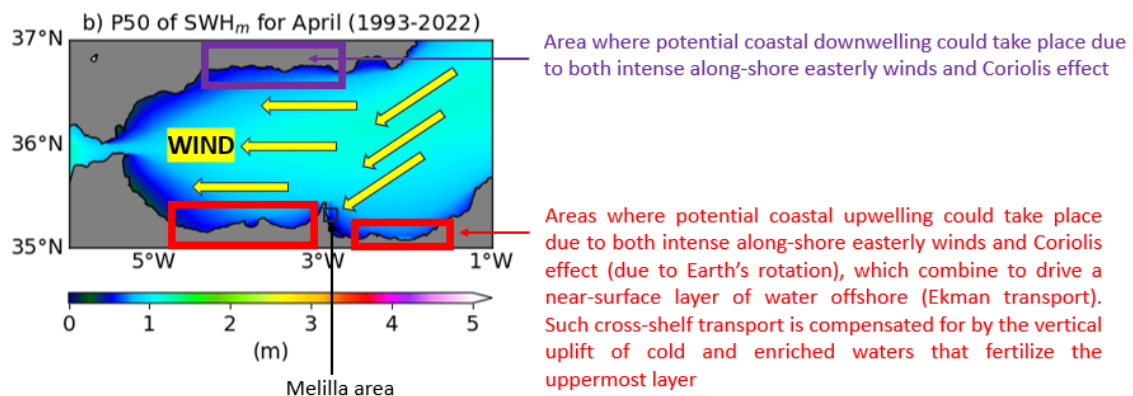
[Comment 41] Lines 246-248:

(a) The definition of agitation was given in line 156 and, based on the Stockdon et al. 2006) work, it relates to the IG wave inshore the port that are forced by the waves offshore (measured by the Melilla buoy). Here it seems that we are using the term "agitation response" to design the sea level variability inside the port, which can be linked to the penetration of waves but also to astronomical tides or storm surge. These seem to be different concepts for the term "agitation".

**OK, 100% accomplished.** We are sorry, that was a typo. In L146 we pretended to give the definition of infragravity waves height. All the methodology section has been restructured to better clarify the concept of wave agitation response and thereby avoid any misunderstanding.

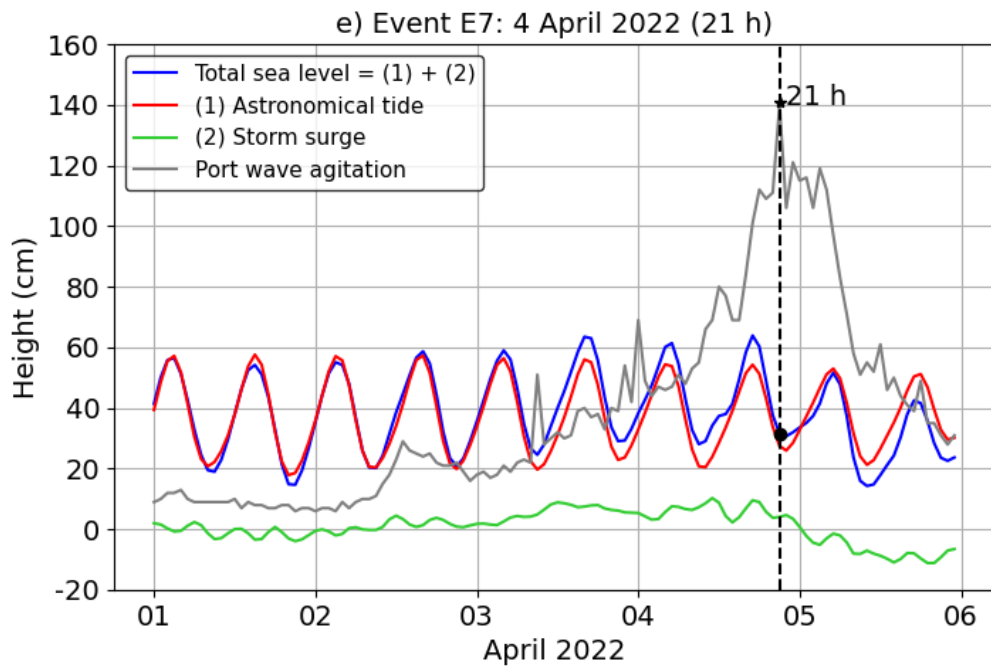
(b) Why not to include also wind forcing conditions together with astronomical tide and storm surge? Storm surge was (in the text) only associated with the isostatic response of sea surface to the atmospheric pressure. Besides this effect, the wind can force upwelling or downwelling responses along the coast, which are associated with sea level changes. In the case of the extreme events reported, the easterly winds would expectedly promote strong upwelling along the Melilla coastline, leading to a sea level fall near the coast.

**OK, 70% accomplished.** We did not include the wind forcing as there was not a wind sensor in the study area. Besides, we think that persistently strong easterly winds can hardly induce coastal upwelling in Melilla due to its specific coastal orientation. Conversely, strong and persistent southeasterly winds may induce coastal upwelling in Melilla.

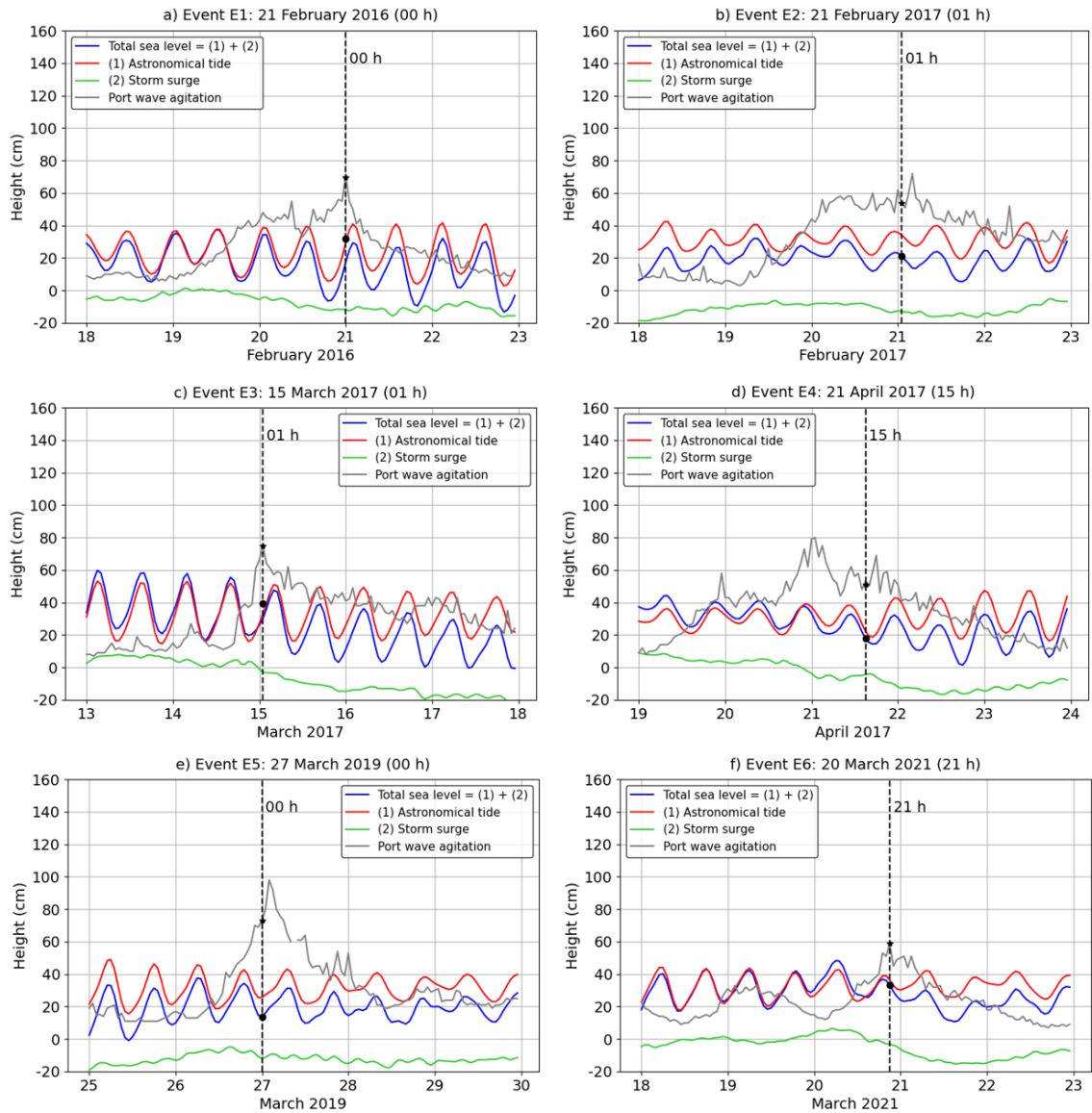


In Figure 2d (show below), the total sea level (blue line), the astronomical tide (red line) and the storm surge (non-tidal residual, green line) are now shown along with the port agitation (grey line) in order to evaluate the influence of the former factors on the port agitation.





Analogously, the new Annex 3 shows the same information for the six previous extreme events (E1-E6):



[Comment 42] Line 262: "... closest to the moored buoy...". Could you indicate at which distance from the buoy location?

**OK, 100% accomplished.** Since the MED reanalysis grid point is located at 2.916°W-35.354°N and the coastal buoy is located at 2.940°W-35.330°N, the distance between them is 3.45 km. Such distance has been indicated in the manuscript: "the MED reanalysis grid point (2.916°W, 35.354°N) closest to the moored buoy (located at a distance of 3450 m) was selected..."

[Comment 43] Line 272: But a similar maximum of P99 is also present in February for the buoy measurements.

**Not accomplished.** We would like to inform Reviewer-2 that panels b and c from Annex 3 have been removed in the new version of the manuscript, following Reviewer-1 suggestion. Therefore, the associated paragraph has been also deleted.

[Comment 44] Line 287: "... we select only March and July...". Although March corresponds in fact to the maximum P99 values of SWH for the time series 1993-2022, we saw that April presented the maximum values in P99 o SWH for the period 2009-2022 and for the time series of the wave buoy measurements. So why haven't you taken April as the representative month for the stormy season (and to show to the reader the spatial distribution of P50 and P99, in

Annex 4 a,c), given that this is the month for which the discussion in this paper is centred and also that this is the month that you selected to highlight the trends in figure 4a?

**OK, 100% accomplished.** Maps for March in Annex 4 have been replaced by maps for April.

[Comment 45] Line 298: "... of 2 cm year<sup>-1</sup> ", again, check if SI units should be used in the text.

**OK, 100% accomplished.** We have checked that cm is a valid unit.

[Comment 46] Lines 305-307: You state that although trend maps of P99 SWH for March and May showed relevant trends, they are not commented because they are located in areas far from the Melilla port area. But is it not that the goal of this exercise, to examine the conditions in the Alborán Sea to try to understand what conditions or change of conditions could be leading to the development of extreme storms such as the one measured in April 2022?

**OK, 100% accomplished.** Those maps have been commented. Notwithstanding, we would like to inform Reviewer-2 that Reviewer-1 requested to remove Annex 5: [Comment 38] "*Annex 5. Consider removing this annex because the most of the pixels show non-significant trend values*".

General comment to 4.5 "Trends in Extreme Wave Climate":

[Comment 47] the analysis is presented in terms of the SWH percentiles. But the conditions affecting the Melilla port are associated not only with the offshore wave height but also with the offshore wave period and direction (for the particular environment of the port, this can be seen in the correlation diagrams that you present in figure 3 b,d). Was this analysis made for the 1993-2022 reanalysis? If so, can you introduce some of these results in the discussion in section "5. Conclusions"?

**OK, 100% accomplished.** No, such analysis was not conducted, although we agree with Reviewer-2 that offshore wave period and direction deserve a detailed exploration. We also must confess that the specific format of the Ocean State Report Special Issue (the length of the manuscript is limited to a maximum of 4 figures and 3000 words) did not provide room for deeper analysis of wave period. In this line of thought, we already described in the conclusions (L370): "long-term historical changes in wave period and directionality are receiving increasing attention and should be further analysed to assess their specific impact on harbours operability".

In order to follow Reviewer-2's suggestion and mitigate this shortcoming, several sentences have been introduced along the manuscript with the aim of emphasising the relevant role played by the wave period in the harbour agitation, especially during E7 extreme event:

Section 4.4, L264: "*Finally, it should be noted that although the SWH values registered outside the port during E7 event were the extremely high (7.32 m), the record-breaking harbour agitation (1.4 m) was primarily triggered by the unprecedented wave period (9.3 s), as readily derived from equation [4]. Therefore, it has been evidenced that compound events (i.e., multiple extreme events that occur simultaneously or in close sequence) are of particular concern for harbour operability, as their individual effects may interact synergistically.*"

Section 5, L380: "*Likewise, offshore wave period also plays a primary role in the modulation of harbour agitation, as derived from equation 4 and the results exposed in Figure 3d. As a consequence, any potential increase in both wave period and SWH could lead to the so-called compound extreme events, which are considered to be a major risk of climate change since they can cause more significant damage than individual extreme events (Velpuri et al., 2023).*"

Reference:

Velpuri, M., Das, J. and Umamahesh, N.V. Spatio-temporal compounding of connected extreme events: Projection and hotspot identification, *Environmental Research*, 235, 116615, doi:10.1016/j.envres.2023.116615, 2023.

[Comment 48] Lines 322-231: This block of text is reproducing the information that you already provided in section 4.

**OK, 100% accomplished.** This piece of text has been rephrased and shortened to avoid any redundancy with the text provided in section 4.

[Comment 49] Line 324: "...derived from the hourly time series....", to become "...derived from the hourly time series for the period 2008-2022...."

**OK, 100% accomplished.**

[Comment 50] Line 341-342: "...this common atmospheric configuration seems to predominantly feature during the same stage of the year, a 6-week period between late February and early April (Figure 1, d)". This conclusion is not derived from figure 1-d, which only show us that the extreme wave events occur during that period, without relating them to a specific atmospheric pattern. The conclusion can be derived from the analysis of figures 2a and Annex 1 a to f that link the events to the atmospheric patterns.

**OK, 100% accomplished.** Since a new bar diagram has been added as Figure 2d, the sentence has been rephrased as follows: "this common atmospheric configuration seems to predominantly feature during the same stage of the year, a 50-day period between late February and early April (Figure 2d)."

General comments to "5. Conclusion" section:

[Comment 51] Comment 1: The estimates of the return period are key to guide the design of coastal structures and the planning of port operations. Given such a huge importance, could you say something about how robust are the estimates of return period that you provided in section 4?

**OK, 100% accomplished.** An additional paragraph has been added to better underline the need to revise security protocols taking into account the updated, robust return periods:

*"Special attention should be focused on the thorough revision of security protocols and the implementation of mitigation plans within the harbour territory based on the updated return periods presented in this work. The design lifetime risk should be recalculated accordingly as coastal structures in the vicinity of the harbour must resist growing stresses during their lifespan and operations, such as wave overtopping, floodings or resonance, to name a few. While the current port layout configuration must be adapted to the increasing frequency and magnitude of these stressors, future maritime facilities at Melilla harbour should be wisely designed and constructed taking into account these outcomes in order to withstand extreme wave regimes imposed by the changing marine environment (Vanem et al., 2019). Albeit methodologically robust, the return periods exposed in this work are based on short (12-year) timeseries of quality-controlled in situ wave observations. Therefore, they should be further complemented with return periods computed by means of longer modelled time series from very a high-resolution wave reanalysis."*

[Comment 52] Comment 2: "Section 5. Conclusions" could accommodate a more extensive discussion about the conditions leading to the extreme events that affect the SW Mediterranean

(in particular, the Melilla area) and about our perception regarding the future occurrence of storms such as the one of 4-5 April 2022.

The following paragraph has been added to Section 5:

*“Therefore, it might be deduced that large-scale atmospheric blocks leading to severe sea states in Melilla tend to be more probable during the winter-to-spring transition period. This outcome is in line with previous blocking climatologies for the eastern North Atlantic (Kautz et al., 2022; Barriopedro et al., 2006). In this context, previous works have also explored the dynamical links between blocking and the North Atlantic Oscillation (NAO), which is the leading mode of atmospheric circulation variability over the Euro-Atlantic sector and is characterized by a seesaw of atmospheric mass between the Iceland Low and the Azores High (e.g., Hurrell and Deser 2009). The NAO appeared as the leading variability pattern during winter, accounting for the 45% of the blocking frequency variance (Barriopedro et al., 2006).”*

You conducted an analysis of wave conditions (based on the SWH) for the global Alborán Sea, characterizing the mean conditions for the 1993-2022 period and the trends for each month. It would be interesting to put these results in a more global perspective, for example by comparing them with other studies that focus the larger area of the W Mediterranean Sea, such as the study of Amarouche, Akpinar and Semedo (2022) (“Wave storm events in the Western Mediterranean Sea over four decades”, Ocean Modelling 170, 101933,2022.

**OK, 100% accomplished.** The discussion against previously reported results has been enriched with the inclusion of Amarouche et al. work.

## 2.2 References

[Comment 53] All references indicated in the text and tables are reported in the reference list.

Correct the following references indicated in the list of references:

- “Chiggiato et al. 2023:” - line 435. Change to “Chiggiato, J., Artale, V., de Madron, X. D., Schroeder, K., Taupier-Letage, I., Velaoras, D., Vargas-Yáñez, M. :” (the data of the publication is correctly indicated in line 436, at the end of the reference). **Done!**
- “Fanti V., Ferreira, Ó., Kümmerer, V. et al.” – line 472, not justified the use of et al. , change to “Fanti V., Ferreira, Ó., Kümmerer, V., Loureiro, C.” **Done!**
- “García-Valdecasas, J., Pérez Gómez, B., Molina, R. et al.” – line 474 – not justified the use of et al., in order to maintain consistence with other references present in the table **Corrected!**  
  
(note: “Garrabou, J., Gómez-Gras, D., Medrano, A. et al.”- line 476 – justified the use of et al. given the extensive list of authors). **OK!**
- “Eyring....., 2021: Human....” – line 466. Remove 2021, the date of publication appears correctly at the end of reference, in line 471. **Done!**

## 2.3 Tables

[Comment 54] Following the comments made in 2.1 above, a table indicating the different systems/models used, providing the geographical location covered by those systems/models (e.g. mooring position or model area of coverage), the time period covered by data and the spatial/time resolution of the data will be very helpful to the reader.

**OK, 100% accomplished.** A new Table 2 has been introduced in the manuscript the requested information is gathered.

[Comment 55] Table 5 Caption: Perhaps you could indicate which parameters of Weibull distribution corresponds to what (slope, shape, threshold).

**OK, 100% accomplished.** This has been clarified in old Table 5 (now Table 4)

[Comment 56] Table 6, 3<sup>rd</sup> line: negative vale “-0.15m” should be an error and correspond to “=15 m”.

**OK, 100% accomplished.** Table 6 has been replaced by Figure 3a where this typo has been corrected.

[Comment 57] Table 6 caption, line 635. Indicate references for the thresholds presented or refer to the text.

**OK, 100% accomplished.** Table 6 has been replaced by Figure 3a. The caption associated to Figure 3a has been modified to indicate the references for the thresholds.

## 2.4 Figures

[Comment 58] Figure 1a: The change of colour scale from figure 1a to figure 1b can confuse the reader (although the colour scales are clearly indicated)

**OK, 100% accomplished.** We have changed the palette by a new one with a broader variety of colours so now both maps share a common scale to avoid any confusion to the reader.

[Comment 59] Figure 1b: Table inserted in figure:

b.1 Specific question: indicate clearly what is the period (mean period, peak period...?) and what is the direction (mean direction, peak direction...?) that are indicated in the table.

**OK, 100% accomplished.** We have clearly indicated that mean period, peak period and mean direction are the variables shown in the table.

[Comment 60] Figure 1b: General comment: This table would be better located in the "Tables" section. This would allow to include additional information that can be relevant (such as the return period for each event and the duration of SWH above P99) as proposed in the comments inserted in 2.1.

**OK, 100% accomplished.** A new Table 3 inserted in the manuscript with additional information.

Figure 2.

[Comment 61] (a) The vectors in figure 2b correspond to what? They should correspond to the wind at 10m vectors but it's confuse since the vectors lengths seem not to correspond to the wind speed colour scale. Note for example that, in the figure, vectors are longer offshore the NW Spain (offshore Cape Finisterre and Galician coast), where speeds are about 15 m/s, than in the Gulf of Cadiz or in the Alborán Sea, where speeds approach 20 m/s

**OK, 100% accomplished.** The vectors indeed represent the wind at 10 m height. In particular, we used a python function to plot the 2D field of arrows: **quiver**. Quiver is defined as follows:

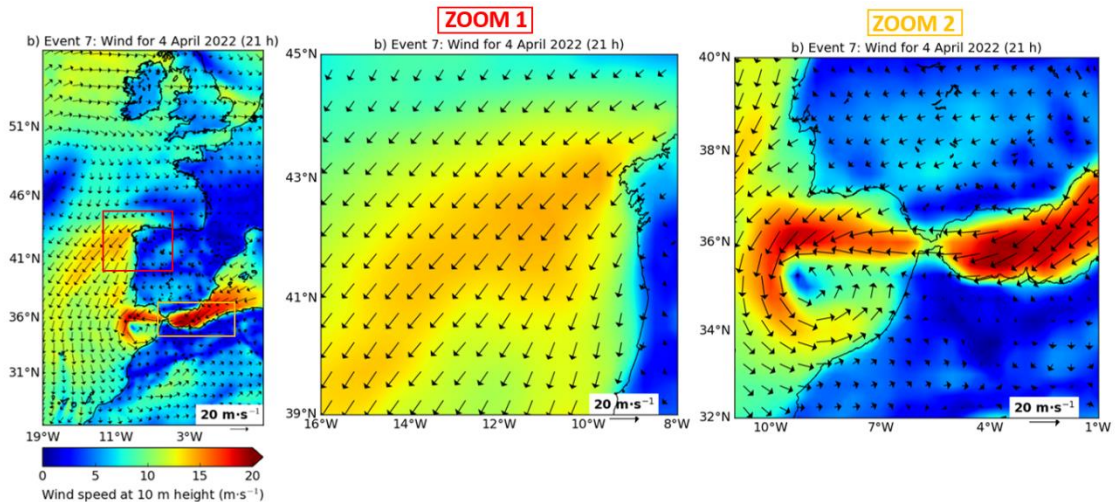
**quiver**([X, Y], U, V,) where X, Y define the arrow locations, U, V define the arrow directions. As additional parameter, we can introduce “pivot” to define the part of the arrow that is anchored to the X, Y grid. The arrow rotates about this point. Pivot has these possible values: **{'tail', 'mid', 'middle', 'tip'}**, where the default value is 'tail'. That means that the arrow size is representative of the wind field at the tail of the arrow.

Further details can be found at:

[https://matplotlib.org/stable/api/as\\_gen/matplotlib.pyplot.quiver.html](https://matplotlib.org/stable/api/as_gen/matplotlib.pyplot.quiver.html)

Please find below the Figure 2b where the two subregions mentioned by Reviewer-2 (NW Spain and Alborán Sea) have been zoomed in order to better compare the arrows length. Please, keep in mind that the arrow length is representative of the grid point where the arrow tail is located.

As Reviewer-2 will check, arrows length in NW Spain (yellow-orange zones) are not longer than those represented in the Alborán Sea or Gulf of Cádiz (red and dark-red zones).



We understand Reviewer-2's suspicion, which is motivated by the fact that in Figure 2b we only plotted one arrow of every four for the sake of readability. In ZOOM-1 and ZOOM-2 panels we plotted one arrow of every two so it is easier to notice the differences between arrows representing 13 m/s speeds (yellow zones) and those representing 18 m/s speed (red zones). We hope this explanation satisfies Reviewer-2 and we can keep Figure 2b in its current form. Otherwise, should we offer as possible solution the following approach: we could plot again the maps imposing the value 'mid' for the aforementioned parameter pivot. We leave the final decision at Reviewer-2's discretion.

[Comment 62] (b) Sea level pressure units: used the classical units used in meteorology (hPa), change if consistency with SI units along the text is required

**OK, 100% accomplished.** We have checked that Sea level pressure units can be expressed in hPa, it is accepted by the journal.

[Comment 63] Figure 2 Caption: "wind at 10m.." should become "... wind at 10m height".

**OK, 100% accomplished.** Corrected in Figure 2 caption.

[Comment 64] Annex 1: Sea level pressure units: used the classical units used in meteorology (hPa), change if consistency with SI units along the text is required.

**OK, 100% accomplished.** We have checked that Sea level pressure units can be expressed in hPa, it is accepted by the journal.

[Comment 65] Annex 2: The vectors in figure (a) to (f) correspond to what? They should represent the wind at 10m vectors but then the vector length does not correspond to the wind speed color scale. Note for example that, in figure a, the vectors along the W Moroccan coast are similar with the ones represented in the Alborán Sea although there is a strong difference in the speeds represented by the colors.

**OK, 100% accomplished.** The vectors indeed represent the wind at 10 m height. In particular, we used a python function to plot the 2D field of arrows: quiver. Quiver is defined as follows:

quiver([X, Y], U, V,) where X, Y define the arrow locations, U, V define the arrow directions.

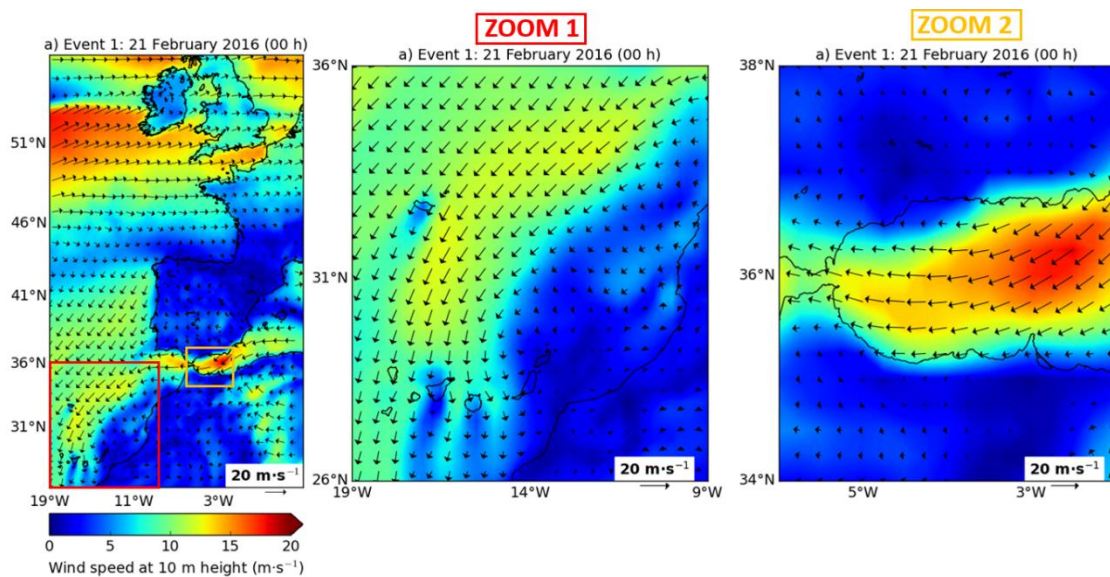
As additional parameter, we can introduce “pivot” to define the part of the arrow that is anchored to the X, Y grid. The arrow rotates about this point. Pivot has these possible values: **{'tail', 'mid', 'middle', 'tip'}**, where the default value is 'tail'. That means that the arrow size is representative of the wind field at the tail of the arrow.

Further details can be found at:

[https://matplotlib.org/stable/api/as\\_gen/matplotlib.pyplot.quiver.html](https://matplotlib.org/stable/api/as_gen/matplotlib.pyplot.quiver.html)

Please find below the Annex 2a where the two subregions mentioned by Reviewer-2 (Morocco coast and Alborán Sea) have been zoomed in order to better compare the arrows length. Please, keep in mind that the arrow length is representative of the grid point where the arrow tail is located.

As Reviewer-2 will check, arrows length in Morocco (yellow zones) are not longer than those represented in the Alborán Sea (red zones).



We understand reviewer-2’s suspicion, which is motivated by the fact that in Annex 2a we only plotted one arrow of every four for the sake of readability. In ZOOM-1 and ZOOM-2 panels we plotted one arrow of every two, so it is easier to notice the differences between arrows representing 13 m/s speeds (yellow zones) and those representing 18 m/s speed (red zones). We hope this explanation satisfies the Reviewer-2 and we can keep Annex 2a in its current form. Otherwise, should we offer as possible solution the following approach: we could plot again the maps imposing the value ‘mid’ for the aforementioned parameter **pivot**. We leave the final decision at Reviewer-2’s discretion.

[Comment 66] Annex 3 Caption: please indicate to what corresponds the red and blue fits in figure 3a.

**OK, 100% accomplished.** The caption has been modified: “best linear fit (cyan line) of scatter plot between hourly estimations of significant wave height observed by Melilla coastal buoy (SWH<sub>o</sub>) and modelled by MED reanalysis (SWH<sub>m</sub>) in the grid point closest to the moored buoy for an 12-year period (2011-2022). The red line represents the result of perfect agreement with slope 1.0 and intercept 0. Statistical metrics are adhered in white box.”

### 1. Technical Aspects

[Comment 67] Line 122: “... the wave climate Melilla area... “should read “... the wave climate affecting Melilla area...” or equivalent.



OK, 100% accomplished (in section 4.5)