

# Monitoring main ocean currents of the IBI region.

Álvaro de Pascual Collar<sup>1</sup>, Roland Aznar<sup>1</sup>, Bruno Levier<sup>2</sup>, Marcos García Sotillo<sup>1</sup>

<sup>1</sup>Nologin Oceanic Weather Systems, Paseo de la Castellana 216, Floor 8th, Office 811, 28046 Madrid, Spain

<sup>2</sup>Mercator Ocean, 8-10, rue Hermès, 31520, Ramonville Saint-Agne, France

5 *Correspondence to:* Álvaro de Pascual Collar (a.depascual@nologin.es)

**Abstract.** The Iberia-Biscay-Ireland (IBI) region is located on the eastern margin of the North Atlantic. This geographical position results in a diverse array of currents, primarily including southward surface currents (associated to the North Atlantic subtropical gyre) and poleward slope currents at intermediate depths following the continental margins of Africa and Europa. Ocean currents have significant climatic, environmental, economic, and social implications, making them a crucial parameter whose variability needs to be monitored to anticipate diagnosis and support decision-making in the face of changing scenarios.

The present study proposes a methodology that allows for systematic monitoring of ocean currents. This methodology is based on calculating volume transports within monitoring windows defined using: (i) present knowledge of the ocean and (ii) delineation of the water mass to be monitored based on its density range. The proposed indicator is computed using various sources of observational and modeling data, resulting in a multiproduct output. This approach provides not only an Ocean Monitoring Indicator (OMI) of transport anomalies but also an analysis of uncertainties.

The calculation of this OMI on the currents in the IBI region shows that, despite the high uncertainties, the index is capable of detecting events of high/low transport intensity as well as significant transport trends superimposed on the interannual variability of some of the analyzed currents.

## 20 **1 Introduction**

The IBI (Iberia-Biscay-Ireland) region encompasses the Northeastern Atlantic Ocean from the Canary Islands (latitude 28°N) to the coasts of Ireland and Great Britain (latitude 60°N). This zone is defined as one of the Marine Forecasting Centres of Copernicus Marine Service (Figure 1). The IBI area is a very complex region characterized by a remarkable variety of ocean processes and scales (Sotillo et al., 2015). The western, and deeper, side of the IBI domain is affected by large-scale currents, mainly the closure of the North Atlantic Drift, where it splits into two branches, the major one continuing north along the northwestern European shelves (Bower et al., 2002; Holliday et al., 2008) and the other, goes eastward to form the eastern boundary current of the North Atlantic subtropical gyre. This boundary current is composed of the Azores Current (Jia, 2000; Peliz et al., 2007), the Portugal equatorward current (Pérez et al., 2001) and the Canary Current (Knoll et al., 2002; Mason et al., 2011). Along the European continental slope, a subsurface current flow northward following the coasts of Portugal, Spain (Mazé et al., 1997) and the Celtic-Armorican Slope (Fricourt et al., 2007). The signature of this current can

be observed as far north as Porcupine Bank (52°N) (White & Bowyer, 1997, Friocourt et al., 2007, Pascual et al. 2018, de Pascual-Collar et al., 2019). The intermediate levels of the Canary basin are affected by the northward-flowing Antarctic Intermediate Water. The flow of this globally important water mass has been described in the Lanzarote passage, located between the Canary Islands and the African coast (Knoll et al., 2002; Machin et al., 2010). The Alboran Sea, located in the Western Mediterranean, is part of the IBI domain. There, the Atlantic surface inflow through the Gibraltar Strait causes an eastward flow of modified Atlantic Water, forming the Western Mediterranean Water. This eastward flow is constrained near the African coast after passing the Almería-Oran front (Tintoré et al., 1988; Benzohra and Millot, 1995; Font et al., 1998), creating the Algerian Current (Font et al., 1998; Sotillo et al., 2016).

The variability of ocean currents in the IBI domain is relevant to the global thermohaline circulation and other climatic and environmental issues. For example, as discussed by Fasullo and Trenberth (2008), subtropical gyres play a crucial role in the meridional energy balance. The poleward salt transport of Mediterranean water, driven by subsurface slope currents, has significant implications for salinity anomalies in the Rockall Trough and the Nordic Seas, as studied by Holliday (2003), Holliday et al. (2008), and Bozec et al. (2011). The Algerian current serves as the sole pathway for Atlantic Water to reach the Western Mediterranean. Furthermore, the mixing processes between the Antarctic Intermediate Water and the Mediterranean Water in the African continental slope influences the salinity and nutrients concentration of the Mediterranean Water as it spreads into the North Atlantic (van Aken, 2000; Machin et al., 2010; de Pascual-Collar, 2019). Additionally, ocean currents also influence the spreading of biological populations (Daewel et al., 2008)

Since the main portion of oceanic transports occurs beneath the surface, one of the primary challenges in monitoring ocean currents is the scarcity of observational data for subsurface transport. In this context, modelling data offers a valuable alternative by providing physically consistent results in regions with sparse observations. Additionally, due to the modelling data are provided in static grids, the operational computation of oceanic water mass transport is simplified. However, it is worth noting that modeling results at these intermediate and deep levels have a limited level of validation. To address this issue, ensemble approaches can be employed to estimate the uncertainties of the results, thereby improving the reliability of the findings.

In addition to climate-related regional applications, such long-term monitoring of currents in the IBI region can be of great interest for those ocean-related activities, for which such information on regional currents variability can enhance decision-making processes in the blue economy sectors (Rayner et al., 2019). Particularly useful for maritime navigation and safety (Rayner et al., 2019), fight against pollution, fisheries, aquaculture, marine renewable energy (Cabagnaro et al., 2020) and scientific research. By understanding the dynamics of ocean currents, stakeholders in these sectors would be able to optimize their operations, improving safety, and planing/developing more sustainable practices. The availability of accurate and up-to-date information on regional ocean currents would contribute to the overall efficiency and effectiveness of ocean-related activities in the IBI region.

The aim of this work is to provide a pool of multi-product OMI (Ocean Monitoring Indicators) focused on monitoring the activity of the main currents described in the Iberia-Biscay-Ireland regional seas. To this aim, several monitoring vertical sections are proposed, and anomalies of transverse water transports are computed, providing information on the variability and trends of the monitored regional currents.

## 2 Data and methods

The present study proposes a methodology to monitor the main ocean currents in the IBI region. This is achieved by analyzing the velocity field in the region and proposing representative monitoring windows where the volume transport is monitored. Since the proposed monitoring windows are defined to follow specific water masses, they are defined attending not only to the spatial representativeness of the region but also defining a range of specific densities representative of the targeted water mass.

In order to provide an ensemble-based final result, five Copernicus products listed and referenced in Table 1 have been used. Among these products, there are four reanalysis products (GLO-REA, IBI-REA, NWS-REA, and MED-REA) and one product obtained from reprocessed observations (GLO-ARM).

To perform monitoring of the currents described in the introduction, some vertical sections have been defined (see geographical locations in Figure 1 and further details in Table 2). These sections have been proposed based on the existing bibliographic description of the main currents occurring in the IBI region. Therefore, the RT (Rockall Trough) section has been defined to monitor zonal transports of Mediterranean-origin water towards the North Sea (Holliday et al., 2008; Lozier and Stewart, 2009). The N48 Section has been included to monitor total transports along the parallel 48°N; this section corresponds to another OMI operationally delivered by the Copernicus Marine Service (EU Copernicus Marine Service Product, 2019) but computed in the IBI domain. The CAS (Celtic-Armorican Slope) Section has been defined to monitor northward flows along the European continental shelf (Fricourt et al., 2007). The WIP (West Iberian Peninsula) section aims to study both the northwards flow of intermediate Mediterranean water known as Iberian Poleward Current (Daniault et al., 1994; Mazé et al., 1997; Fricourt et al., 2007) and the southwards wind-induced surface flows along Portuguese coast also known as Portugal Current (Pérez et al., 2001). The ABB (Algerian-Balearic Basin) Section has been defined to analyze the behaviour of the Algerian Current (Tintoré et al., 1988; Benzohra and Millot, 1995; Font et al., 1998). The AS (African Slope) section has been defined to monitor surface transports induced by the trade winds along the coasts of the African continent, commonly known as the Canary Current (Knoll et al. 2002, Mason et al. 2011). Similarly, the MA (Madeira) Section is intended to monitor westward zonal surface flows near the island of Madeira, commonly referred to as the Azores Current (Mason et al., 2011). Finally, the LP (Lanzarote Passage) Section has been defined to monitor the flow of deep Antarctic water between the African continental shelf and the Canary Islands (Knoll et al., 2002; Machin et al., 2010).

The OMI defined in this study aims to monitor currents, by calculating volume transport anomalies in specific layers inside the previously described vertical sections. Since all the products used are in a gridded format, the vector field of transports is computed by multiplying the velocity field components by the cross-sectional area of the calculation grid cells for each product. As each product is provided on a particular grid with a specific resolution, this step is performed using the grid mesh of each product.

Within each section (i.e., RT, 48N, CAS, WIP, AAB, MA, AS, MA, and LP), the signal of each the flow associated to specific water masses to be monitored have been identified. This identification is based on the oceanographic description of the region obtained from the literature. Figure 2 presents the results of transverse velocity obtained in the vertical sections defined in Figure 1. The meridional section defined in Rockall Trough (RT) reveals two regions exhibiting intense and opposing zonal transports: the southern area (situated between approximately 53 °N and 54°N), characterized by the eastward transport of modified Mediterranean Water into the Nordic Seas, and the northern side, located between latitudes approximately 55.5 °N and 56 °N, displaying subsurface westward transport emanating from Rockall Trough. This observed pattern aligns with the cyclonic circulation previously described in the Trough by New and Smythe-Wright (2001). The section defined along parallel 48°N (48N) has been included to compute the same results than other OMI computed by Copernicus Marine Service (EU Copernicus Marine Service Product, 2019). This section has not been defined to compute the transport of a specific current but to compute the total southward transport along this latitude. The zonal section defined in the Celtic-Armorican Slope (CAS) depicts a subsurface poleward flow attached to the continental slope, with maximum intensity of the current located at 1000 m depth. The northward flow affects the complete water column, from few hundreds of meters to the bottom. The zonal section proposed in the Western Iberian Peninsula (WIP) displays a subsurface poleward flow with maximum speed close to the continental slope and a surface equatorward current affecting waters over the continental platform of Portugal. The meridional section between Algeria and Balearic Islands (Algerian-Balearic Vasin; ABB) shows two well defined currents. The eastward (positive values) current attached to the Algerian coast and the westward transport along the Spanish Mediterranean Coast. The meridional section north of Madeira (MA) has been defined to monitor the so-called Azores Current. This current is reflected as an eastward transport seen in upper layers (up to 600 m depth) being the center part of the current influenced (and almost split) by the presence of a sea mountain north of Azores and below 600 m depth transports are strongly influenced by bathymetry. The zonal section defined in the African Slope (AS) displays a similar structure than the section in the Western Iberian Peninsula, marked by an equatorward surface flow over the continental shelf, corresponding to the so-called Canary Current and an opposite subsurface northward flow attached to the continental slope. The zonal section defined in the Lanzarote Passage (LP) exhibits a clear poleward transport close to the continental slope, this transport is split into two levels; the upper-intermediate level comprises from 200 m up to 550 m depth and corresponds to the slope poleward current seen in other sections (such as the African Slope, Western Iberian Peninsula and Celtic-Armorican Slope). The intermediate-deeper level of the poleward current seen in the Lanzarote

130 Passage section comprises the waters from 550 m depth up to the bottom and it is associated with the flows of Antarctic Intermediate Water.

The consistency of the mean transverse velocity in vertical sections found in Figure 1 and the described currents in literature provide the support to propose the lateral boundaries of the monitoring windows defined in Table 2 and marked with vertical  
135 dashed green lines in Figure 2: Rockall Trough Eastward (RTE), Rockall Trough Westward (RTW), Armorican Slope Poleward (ASP), Iberian slope Poleward (IBP), Portugal Current (PC), Algerian Current (ALC), Azores Current (AC), Canary Current (CC), and Antarctic Water (AW). It is worth mentioning that no monitoring windows have been included in the N48 section since the generated OMI will compute the total transport along the 48 °N parallel.

140 Since the tracked currents involved specific water masses, it is considered that the vertical boundaries of the monitoring windows exhibit vertical variability. Thus, the vertical boundaries of the monitoring windows have been defined based on the upper and lower density layers characterizing each monitored water mass. Given that density field exhibits temporal variability within each product, the vertical boundaries of each window are dynamic, adapting to the oscillations in the ocean's density field. To find these vertical limits, the T/S diagrams have been calculated for each monitoring window,  
145 temporally averaged over the period 1993-2021. Figure 3 shows the calculated T/S diagrams for each monitoring window using the IBI-REA product. The solid density lines marked on each diagram indicate the boundaries that have been selected to define the water mass characterizing each current. Additionally, these density boundaries are also represented in Figure 2 as horizontal dashed lines in green. Since there are some monitoring windows whose vertical boundaries may be defined by the surface (PC, CC, AC, and ALC windows) or the seafloor (AW window), some panels in Figure 3 show a single density  
150 line. Table 2 presents the density-defined vertical boundaries used for each window, including those windows with surface or seafloor as their vertical limit.

Subsequently, the transport estimates are integrated within each defined monitoring window monthly basis. As explained earlier, the vertical boundaries of the monitoring windows are dynamic and defined based on specific density layers. The  
155 UNESCO equations (Fofonoff and Millard, 1983) are used to estimate the density field from the salinity and potential temperature fields of each product. Thus, each monitoring window is defined at each time step with fixed lateral boundaries (defined as static latitude/longitude locations) and variable vertical boundaries that may vary in time according to vertical oscillations of the density field (Table 2).

160 After spatial integration, estimated transport timeseries is obtained for each product and each monitoring window. Since the proposed OMI aims to focus on interannual and longer time scales, seasonal variability is filtered out, being the data processed as anomalies by removing monthly mean from each value, using the climatological average of the time series in the period 1993-2021 as reference.

165 Finally, outcomes from the different products are combined to produce an ensemble, being showed the mean of all products and the standard deviation. Since not all Copernicus products used in this study cover the entire IBI region, some products cannot be used for current monitoring in certain monitoring windows (Table 2 provides a list of the products used to monitor transports in each Section).

### 3 Results and discussion

170 The anomaly of volume transports in specific monitoring windows (relative to the monthly mean transport between 1993 and 2021) is proposed as OMI for each regional current (Figure 4). The uncertainty is assessed by the estimation of indicators with several different Copernicus Marine products (OMIs are estimated with the more complete set of products available in each monitoring window; see Table 2); the higher is the agreement of results provided by diverse systems the higher is its statistical robustness.

175 The interpretation of the OMI results presented in Figure 4 should be done considering that the calculated average transports include the sign of the current velocity vector (positive for northward and eastward transports, and vice versa). Therefore, the anomalies shown in the OMI should be interpreted following the same sign convention. Thus, a positive anomaly can indicate an intensification, weakening, or even a reversal of the current. These options can be deduced from the red dashed line included in each plot. It represents the mean value of transport (with the sign reversed); thus, it aligns with the anomaly  
180 value that nullifies the transport across the monitoring window. Beyond this line, the transport reverses, indicating a transport in the opposite direction. Among the proposed monitoring windows, RTE, ASP, IBP, AW, and ALC exhibit a positive mean velocity, so positive transport anomalies imply an intensification of the current. On the other hand, the RTW, PC, CC, AC, and N48 monitoring windows show negative mean transport values, where intensification of the current is represented by negative transport anomalies.

185 Analyzing the uncertainties of the time series, can be observed that differences among the products sometimes hinder the detection of significant anomalies. This is the case for the ASP, IBP, PC, and AW currents, for which anomalies exceeding the data dispersion are scarce. Conversely, there are other monitoring windows, where a lower data dispersion allows for a more precise estimation of the overall variability. This is the case for the CC and ALC currents, where, due to being more stable and shallower currents, the uncertainties are generally smaller than the magnitude of the anomalies. In the remaining  
190 monitoring windows (RTE, RTW, AC, and 48N), uncertainties are considerable but sufficiently low allowing identification of specific events with pronounced variability. In this regard, it can be highlighted as examples the events of negative anomalies (1995-1996, 1999) and positive anomalies (2010 and 2014) in the RTE section, the positive anomaly of the Azores Current (AC) in 2006, or the anomalous transports along the N48 section in 2003 and 2012.

195 The uncertainty of the results also enables the detection of periods during which it can be assumed that the transport within a monitoring window is non-significant or null. These are periods in which the uncertainty of the data includes the threshold for null transport. Similarly, it is possible to identify periods in which the current reverses, leading to a significant reverse transport. These periods are characterized by both the ensemble mean and the range of uncertainties being greater than the zero-transport threshold. With this type of analysis, it is possible to detect currents that: (i) exhibit occasional halts in transport, as seen in the cases of RTW, ASP, ALC, or AW, where there are years when the net transport is not significant; (ii) display levels of uncertainty sufficiently high to conceal the presence of the current for the majority of the study period (N48 or PC); or (iii) demonstrate significant reversals of the current in specific years, such as the case of CC in 1996 and 2010.

205 Analyzing the trends in the OMIs, Figure 4 shows the absence of statistically significant trends in most of the monitoring sections. However, the sections related to the Mediterranean water flow along the continental shelf do exhibit opposite trends, where the ASP window indicates a decrease of 0.02 Sv/Yr in northward flow along the Celtic-Armorican Slope and an intensification of transport towards the Scandinavian Seas of 0.01 Sv/Yr.

#### 4 Conclusions

210 This study proposes a methodology for defining OMIs to monitor variability of the main ocean currents in the IBI region. The objective is to describe through the proposed indicator strengths and weaknesses of the transports associated. The methodology used to define the OMI involves utilizing various Copernicus Marine products, which allows for an ensemble analysis that not only provides information on the currents, but also yields an assessment of uncertainties associated.

The proposed indicator is based on the definition of monitoring spatial windows that are representative of the overall transport of the current. These spatial windows are defined based on two criteria: Firstly, horizontal boundaries determined using initially bibliographic criteria and by detection of the targeted currents in the averaged velocity fields. Secondly, vertical limits defined based on the observed density of water masses, allowing this methodology, vertical limits of the monitoring window not statically defined, but adaptative to the inherent vertical variability of water masses.

220 The results have demonstrated that the OMI is capable of monitoring the targeted regional currents with varying degrees of uncertainty. The different products used show a higher agreement in shallower and more persistent currents, while the indicator exhibits more uncertainties when monitoring deep currents or those with higher temporal variability. Nevertheless, and despite the magnitude of the uncertainties, the OMI is able to detect periods of high or low activity in six of the proposed monitoring windows (RTE, RTW, CC, AC, ALC, and N48). Outstanding events, including periods of low activity in the Canary Current (in 1996 and 2010), and in the Azores Current, in 2006, as well as a significant intensification of transports associated to this Azores Current, observed in 2021.

The OMI also allows detection of statistically significant trends in some of the monitoring spatial windows. Specifically, the RTE and ASP windows show opposite trends in water transports. While there is a transport increase towards the Nordic Seas in the Rockall Trough, and a decrease in Mediterranean water transported northward through the Celtic-Armorican continental slope.

230 Finally, this study highlights the utility of model data products for monitoring ocean currents. This methodology is particularly relevant for tracking deep currents where observational data availability is limited. The proposed methodology may have a further application in a variety of contexts, such as maritime navigation, fishing, aquaculture, marine renewable energy, and general scientific research. Indeed, next steps in these fields will involve expanding the methodology to monitor not only water transports, but the transports of other properties, such as ocean heat transport, freshwater/salt transports, or  
235 other biogeochemical properties. enhancing the interest of such OMIs on specific fields, such as the study of planetary climate variability.

### **Competing interests**

The contact author has declared that none of the authors has any competing interests.

### **Acknowledgements**

240 This work has been conducted under Contract Number 21002L6-COP-MFC IBI-5600, part of the ongoing partnership between Nologin and Mercator Ocean International. The authors acknowledge Copernicus Marine service for access to the datasets used on this work. Additionally, the helpful comments of anonymous referees are gratefully acknowledged.

### **References**

- 245 Amo-Baladrón, A., Levier, B., Aznar, R., Sotillo, M.G.: Copernicus Marine Service Product User Manual for Atlantic - Iberian Biscay Irish- Ocean Physics Reanalysis Product, IBI\_MULTIYEAR\_PHY\_005\_002, Issue 4.1, Mercator Ocean International, <https://catalogue.marine.copernicus.eu/documents/PUM/CMEMS-IBI-PUM-005-002.pdf>, last access: 5 July 2023, 2022.
- 250 Benzohra, M., Millot, C.: Characteristics and circulation of the surface and intermediate water masses off Algeria. Deep Sea Research Part I: Oceanographic Research Papers, 42(10), 1803-1830, [https://doi.org/10.1016/0967-0637\(95\)00043-6](https://doi.org/10.1016/0967-0637(95)00043-6), 1995.



- 255 Bower, A. S., Le Cann, B., Rossby, T., Zenk, T., Gould, J., Speer, K., Richardson, P. L., Prater, M. D., Zhang, H.-M.: Directly measured mid-depth circulation in the northeastern North Atlantic Ocean: *Nature*, 419, 6907, 603–607, <https://doi.org/10.1038/nature01078>, 2002.
- Bozec, A., Lozier, M. S., Chassignet, E. P., Halliwell, G. R.: On the variability of the Mediterranean Outflow Water in the North Atlantic from 1948 to 2006, *J. Geophys. Res.-Oceans*, 116, C09033, <https://doi.org/10.1029/2011JC007191>, 2011.
- 260 Daewel, U. T. E., Peck, M. A., Kuehn, W., ST. John, M. A., Alekseeva, I., Schrum, C.: Coupling ecosystem and individual-based models to simulate the influence of environmental variability on potential growth and survival of larval sprat (*Sprattus sprattus* L.) in the North Sea. *Fisheries Oceanography*, 17(5), 333-351, <https://doi.org/10.1111/j.1365-2419.2008.00482.x>, 2008.
- 265 Daniault, N., Mazé, J. P., Arhan, M.: Circulation and mixing of Mediterranean Water west of the Iberian Peninsula. *Deep Sea Research Part I: Oceanographic Research Papers*, 41(11-12), 1685-1714, [https://doi.org/10.1016/0967-0637\(94\)90068-X](https://doi.org/10.1016/0967-0637(94)90068-X), 1994.
- De Pascual-Collar, A., Sotillo, M. G., Levier, B., Aznar, R., Lorente, P., Amo-Baladrón, A., Álvarez-Fanjul E.: Regional circulation patterns of Mediterranean Outflow Water near the Iberian and African continental slopes. *Ocean Sci.*, 15, 565–582. <https://doi.org/10.5194/os-15-565-2019>, 2019.
- 275 Dréville, M., Lellouche, J.-M., Régnier, C., Garric, G., Bricaud, C., Hernandez, O., Bourdallé-Badie, R.: EU Copernicus Marine Service Product Quality Information Document for Global Reanalysis Products, GLOBAL\_MULTIYEAR\_PHY\_001\_030, Issue 1.6, Mercator Ocean International, <https://catalogue.marine.copernicus.eu/documents/QUID/CMEMS-GLO-QUID-001-030.pdf>, last access: 5 July 2023, 2022a.
- 280 Dréville, M., Fernandez, E., Lellouche J.M.: Copernicus Marine Service Product User Manual for the Global Ocean Physical Multi Year Product, GLOBAL\_MULTIYEAR\_PHY\_001\_030, Issue 1.4, Mercator Ocean International, <https://catalogue.marine.copernicus.eu/documents/PUM/CMEMS-GLO-PUM-001-030.pdf>, last access: 5 July 2023, 2022b.
- 285 Escudier, R., Clementi, E., Nigam, T., Aydogdu, A., Fini, E., Pistoia, J, Grandi, A., Miraglio, P.: Copernicus Marine Service Product Quality Information Document Mediterranean Sea Product Centre, MEDSEA\_MULTIYEAR\_PHY\_006\_004, Issue 2.3, <https://catalogue.marine.copernicus.eu/documents/QUID/CMEMS-MED-QUID-006-004.pdf>, last access: 5 July 2023, 2022.

- EU Copernicus Marine Service Product: GLOBAL\_OMI\_WMHE\_voltrp, Mercator Ocean International [data set], <https://doi.org/10.48670/moi-00247>, 2019.
- 290
- EU Copernicus Marine Service Product: MULTIOBS\_GLO\_PHY\_TSUV\_3D\_MYNRT\_015\_012, Mercator Ocean International [data set], <https://doi.org/10.48670/moi-00052>, 2021a.
- EU Copernicus Marine Service Product: NWSHELF\_MULTIYEAR\_PHY\_004\_009, Mercator Ocean International [data set], <https://doi.org/10.48670/moi-00059>, 2021b.
- 295
- EU Copernicus Marine Service Product: GLOBAL\_MULTIYEAR\_PHY\_001\_030, Mercator Ocean International [data set], <https://doi.org/10.48670/moi-00021>, 2022a.
- EU Copernicus Marine Service Product: IBI\_MULTIYEAR\_PHY\_005\_002, Mercator Ocean International [data set], <https://doi.org/10.48670/moi-00028>, 2022b.
- 300
- EU Copernicus Marine Service Product: MEDSEA\_MULTIYEAR\_PHY\_006\_004, Mercator Ocean International [data set], [https://doi.org/10.25423/CMCC/MEDSEA\\_MULTIYEAR\\_PHY\\_006\\_004\\_E3R1](https://doi.org/10.25423/CMCC/MEDSEA_MULTIYEAR_PHY_006_004_E3R1), 2022c.
- 305
- Fasullo, J. T., Trenberth, K. E.: The annual cycle of the energy budget. Part II: Meridional structures and poleward transports. *Journal of Climate*, 21(10), 2313-2325, <https://doi.org/10.1175/2007JCLI1936.1>, 2008.
- Fofonoff, N.P., Millard Jr, R.C.: Algorithms for the computation of fundamental properties of seawater. Paris, France, UNESCO, 53pp. (UNESCO Technical Papers in Marine Sciences; 44), <https://doi.org/10.25607/OBP-1450>, 1983.
- 310
- Font, J., Millot, C., Salas, J., Juliá, A., Chic, O.: The drift of Modified Atlantic Water from the Alboran Sea to the eastern Mediterranean, *Scientia Marina*, 62-3, <https://doi.org/10.3989/scimar.1998.62n3211>, 1998.
- Friocourt Y, Levier B, Speich S, Blanke B, Drijfhout SS. A regional numerical ocean model of the circulation in the Bay of Biscay, *J. Geophys. Res.*,112:C09008, <https://doi.org/10.1029/2006JC003935>, 2007.
- 315
- Guinehut, S.: Copernicus Marine Service Product User Manual Multi Observation Global Ocean 3D Temperature Salinity Heights Geostrophic Currents and MLD Product, MULTIOBS\_GLO\_PHY\_TSUV\_3D\_MYNRT\_015\_012, Issue: 1.1,

- 320 Mercator Ocean International, <https://catalogue.marine.copernicus.eu/documents/PUM/CMEMS-MOB-PUM-015-012.pdf>,  
last access 5 July 2023, 2021.
- Greiner, E., Verbrugge, N., Mulet, S., Guinehut, S.: EU Copernicus Marine Service Product Quality Information Document  
Multi Observation Global Ocean 3D Temperature Salinity Heights Geostrophic Currents and MLD Product,  
325 MULTIOBS\_GLO\_PHY\_TSUV\_3D\_MYNRT\_015\_012, Issue 1.1, Mercator Ocean International,  
<https://catalogue.marine.copernicus.eu/documents/QUID/CMEMS-MOB-QUID-015-012.pdf>, last access 5 July 2023, 2021.
- Holliday, N. P.: Air-sea interaction and circulation changes in the north-east Atlantic, *J. Geophys. Res.*, 108(C8), 3259,  
<https://doi.org/10.1029/2002JC001344>, 2003.
- 330 Holliday, N. P., Hughes, S. L., Bacon, S., Beszczynska-Möller, A., Hansen, B., Lavín, A., Loeng, H., Mork, K. A., Østerhus,  
S., Sherwin, T., Walczowski, W.: Reversal of the 1960s to 1990s freshening trend in the northeast North Atlantic and Nordic  
Seas, *Geophys. Res. Lett.*, 35, L03614, <https://doi.org/10.1029/2007GL032675>, 2008.
- 335 Jia, Y.: Formation of an Azores Current Due to Mediterranean Overflow in a Modeling Study of the North Atlantic. *J. Phys.*  
*Oceanogr.*, 30, 9, 2342–2358, [https://doi.org/10.1175/1520-0485\(2000\)030<2342:FOAACD>2.0.CO;2](https://doi.org/10.1175/1520-0485(2000)030<2342:FOAACD>2.0.CO;2), 2000.
- Knoll, M., Hernández-Guerra, A., Lenz, B., López Laatzén, F., Machín, F., Müller, T. J., Siedler, G.: The Eastern Boundary  
Current system between the Canary Islands and the African Coast, *Deep-Sea Research.* 49-17, 3427-3440,  
340 [https://doi.org/10.1016/S0967-0645\(02\)00105-4](https://doi.org/10.1016/S0967-0645(02)00105-4), 2002.
- Lecci, R., Drudi, M., Grandi, A., Cretì, S., Clementi, E.: Copernicus Marine Service Product User Manual for  
Mediterranean Sea Physical Reanalysis Product, MEDSEA\_MULTIYEAR\_PHY\_006\_004, Issue 2.3,  
<https://catalogue.marine.copernicus.eu/documents/PUM/CMEMS-MED-PUM-006-004.pdf>, last access: 5 July 2023, 2022.
- 345 Levier, B., Reffray, G., Sotillo, M.G.: EU Copernicus Marine Service Product Quality Information Document Atlantic -  
Iberia Biscay Ireland- IBI Production Centre, IBI\_MULTIYEAR\_PHY\_005\_002, Issue 5.1, Mercator Ocean International,  
<https://catalogue.marine.copernicus.eu/documents/QUID/CMEMS-IBI-QUID-005-002.pdf>, last access: 5 July 2023, 2022.
- 350 Lozier, M. S., Stewart, N. M.: On the temporally varying penetration of Mediterranean overflow waters and eastward  
penetration of Labrador Sea Water, *J. Phys. Oceanogr.*, 38, 2097–2103, <https://doi.org/10.1175/2008JPO3908.1>, 2008.
- Machín, F. and Pelegrí, J. L.: Northward Penetration of Antarctic Intermediate Water off Northwest Africa, *J. Phys.*  
*Oceanogr.*, 39, 512–535, <https://doi.org/10.1175/2008JPO3825.1>, 2009.

- 355 Machín, F., Pelegrí, J. L., Fraile-Nuez, E., Vélez-Belchí, P., López-Laatzén, F., Hernández-Guerra, A., Seasonal Flow Reversals of Intermediate Waters in the Canary Current System East of the Canary Islands. *J. Phys. Oceanogr*, 40, 1902–1909, <https://doi.org/10.1175/2010JPO4320.1>, 2010.
- Mason, E., Colas, F., Molemaker, J., Shchepetkin, A. F., Troupin, C., McWilliams, J. C., Sangra, P.: Seasonal variability of  
360 the Canary Current: A numerical study. *Journal of Geophysical Research: Oceans*, 116(C6), <https://doi.org/10.1029/2010JC006665>, 2011.
- Mazé, J. P., Arhan, M., Mercier, H., Volume budget of the eastern boundary layer off the Iberian Peninsula, *Deep-Sea Research*. 1997, 44(9-10), 1543-1574, [https://doi.org/10.1016/S0967-0637\(97\)00038-1](https://doi.org/10.1016/S0967-0637(97)00038-1), 1997.
- 365 New, A. L., and Smythe-Wright, D. Aspects of the circulation in the Rockall Trough. *Continental Shelf Research*, 21(8-10), 777-810, [https://doi.org/10.1016/S0278-4343\(00\)00113-8](https://doi.org/10.1016/S0278-4343(00)00113-8), 2001
- Pascual, A., Levier ,B., Sotillo, M., Verbrugge, N., Aznar, R., Le Cann, B.: Characterization of Mediterranean Outflow  
370 Water in the Iberia-Gulf of Biscay-Ireland region. In: von Schuckmann et al. (2018) The Copernicus Marine Environment Monitoring Service Ocean State Report, *Journal of Operational Oceanography*, 11:sup1, S1-S142, <https://doi.org/10.1080/1755876X.2018.1489208>, 2018.
- Peliz, A., Dubert, J., Marchesiello, P., Teles-Machado, A.: Surface circulation in the Gulf of Cadiz: Model and mean flow  
375 structure. *Journal of Geophysical Research: Oceans*, 112, C11, <https://doi.org/10.1029/2007JC004159>, 2007.
- Perez, F. F., Castro, C. G., Álvarez-Salgado, X. A., Ríos, A. F.: Coupling between the Iberian basin-scale circulation and the Portugal boundary current system: a chemical study, *Deep-Sea Research. I* 48,1519 -1533, [https://doi.org/10.1016/S0967-0637\(00\)00101-1](https://doi.org/10.1016/S0967-0637(00)00101-1), 2001.
- 380 Rayner, R., Jolly, C., Gouldman, C.: Ocean observing and the blue economy. *Frontiers in Marine Science*, 6, 330, <https://doi.org/10.3389/fmars.2019.00330>, 2019.
- Renshaw, R., Wakelin, S., Golbeck, I., O’Dea, E.: Quality Information Document North West European Shelf Production  
385 Centre, NWSHELF\_MULTIYEAR\_PHY\_004\_009, Issue 5.2, Mercator Ocean International, <https://catalogue.marine.copernicus.eu/documents/QUID/CMEMS-NWS-QUID-004-009.pdf>, last access: 5 July 2023, 2021.

Sotillo, M. G., Cailleau, S., Lorente, P., Levier, B., Aznar, R., Reffray, G., Amo-Baladrón, A., Chanut, J., Benkiran, M., Alvarez-Fanjul, E.: The MyOcean IBI Ocean forecast and reanalysis systems: operational products and roadmap to the future Copernicus Service. *J Op Oc.* 8:63–79. doi:10.1080/1755876X.2015.1014663, 2015.

Sotillo, M. G., Amo-Baladrón, A., Padorno, E., Garcia-Ladona, E., Orfila, A., Rodríguez-Rubio, P., Conti, D., Jiménez Madrid, J. A., de los Santos, F. J., Alvarez Fanjul E.: How is the surface Atlantic water inflow through the Gibraltar Strait forecasted? A lagrangian validation of operational oceanographic services in the Alboran Sea and the Western Mediterranean, *Deep-Sea Research.* 133, 100-117, <https://doi.org/10.1016/j.dsr2.2016.05.020>, 2016.

Tintore, J., La Violette, P. E., Blade, I., Cruzado, A.: A study of an intense density front in the eastern Alboran Sea: the Almeria–Oran front. *Journal of Physical Oceanography*, 18, 10, 1384-1397, [https://doi.org/10.1175/1520-0485\(1988\)018%3C1384:ASOAIID%3E2.0.CO;2](https://doi.org/10.1175/1520-0485(1988)018%3C1384:ASOAIID%3E2.0.CO;2), 1988.

Tonani, M., Ascione, I., Saulter, A.: Product User Manual Ocean Physical and Biogeochemical Reanalysis, NWSHELF\_MULTIYEAR\_PHY\_004\_009, Issue 1.3, Mercator Ocean International, <https://catalogue.marine.copernicus.eu/documents/PUM/CMEMS-NWS-PUM-004-009-011.pdf>, last access: 5 July 2023, 2022.

van Aken, H. M.: The hydrography of the mid-latitude North-east Atlantic Ocean II: The intermediate water masses, *Deep-Sea Res.*, 47, 789–824, [https://doi.org/10.1016/S0967-0637\(99\)00112-0](https://doi.org/10.1016/S0967-0637(99)00112-0), 2000.

White, M., Bowyer, P.: The shelf-edge current north-west of Ireland. *Annales Geophysicae* 15, 1076–1083. <https://doi.org/10.1007/s00585-997-1076-0>, 1997.

415

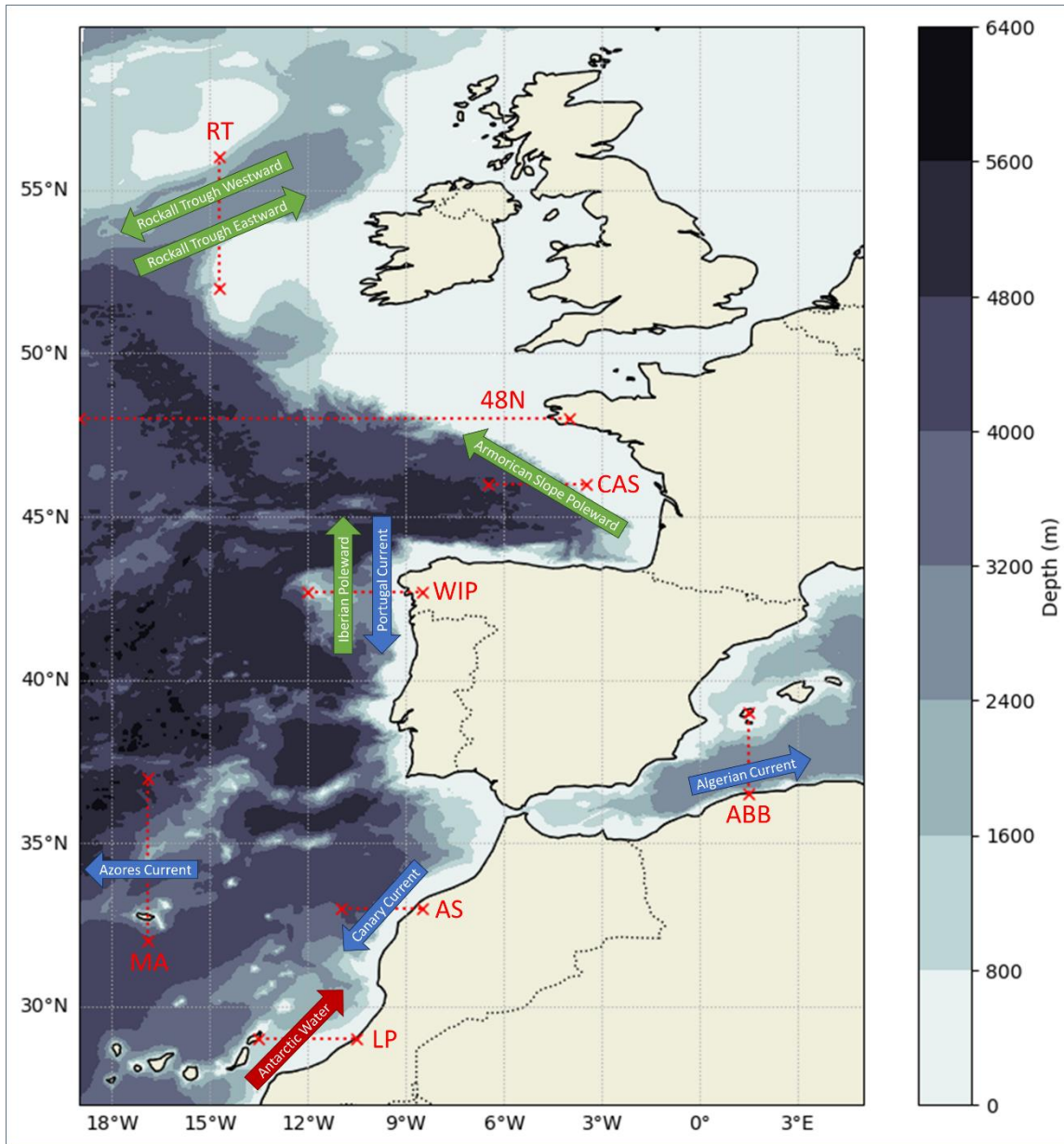
420

Product ref. no.	Product ID Acronym Type	Data access	Documentation: <b>QUID:</b> Quality Information Document. <b>PUM:</b> Product User Manual.
1	GLOBAL_MULTIYEAR_PHY_001_030 (GLO-REA) Numerical models (reanalysis)	EU Copernicus Marine Service Product (2022a)	QUID: Drévilion et al. (2022a) PUM: Drévilion et al. (2022b)
2	IBI_MULTIYEAR_PHY_005_002 (IBI-REA) Numerical models (reanalysis)	EU Copernicus Marine Service Product (2022b)	QUID: Levier et al. (2022) PUM: Amo-Baladrón et al. (2022)
3	MULTIOBS_GLO_PHY_TSUV_3D_MYNRT_015_012 (GLO-ARM) Reprocessed observations	EU Copernicus Marine Service Product (2021a)	QUID: Greiner et al. (2021) PUM: Guinehut (2021)
4	NWSHELF_MULTIYEAR_PHY_004_009 (NWS-REA) Numerical models (reanalysis)	EU Copernicus Marine Service Product (2021b)	QUID: Renshaw et al. (2021) PUM: Tonani et al. (2022)
5	MEDSEA_MULTIYEAR_PHY_006_004 (MED-REA) Numerical models (reanalysis)	EU Copernicus Marine Service Product (2022c)	QUID: Escudier et al. (2022) PUM: Lecci et al. (2022)

**Table 1: List of Copernicus Marine products used for the computation of currents in Iberia-Biscay-Ireland region (IBI).**

<b>Section (Figure 1)</b>	<b>Monitoring Window (Figure 2)</b>	<b>Latitude</b>	<b>Longitude</b>	<b>Density (gr/m3)</b>	<b>CMEMS products</b>
Rockall Trough (RT)	Rockall Trough Westward (RTW)	55.5 / 56.0	-14.7	27.32 / 27.7	GLO-REA IBI-REA GLO-ARM NWS-REA
	Rockall Trough Eastward (RTE)	52.7 / 53.8	-14.7	27.25 / 27.65	
Celtic-Armorican Slope (CAS)	Armorican Slope Poleward (ASP)	46.0	-5.0 / -4.1	27.25 / 27.8	
West Iberian Peninsula (WIP)	Iberian Poleward (IBP)	42.7	-10.35 / -9.6	27.1 / 27.75	
	Portugal Current (PC)	42.7	-9.6 / -9.0	Sfc / 26.9	
Algerian- Balearic Basin (ABB)	Algerian Current (ALC)	36.6 / 37.3	1.5	Sfc / 28.50	GLO-REA IBI-REA GLO-ARM MED-REA
Madeira (MA)	Azores Current (AC)	32.9 / 36.5	-16.9	Sfc / 27.25	GLO-REA IBI-REA GLO-ARM
African Slope (AS)	Canary Current (CC)	33.0	-9.5 / -8.8	Sfc / 26.7	
Lanzarote Passage (LP)	Antarctic Water (AW)	29.0	-13 / -12.4	27.1 / Sfl	

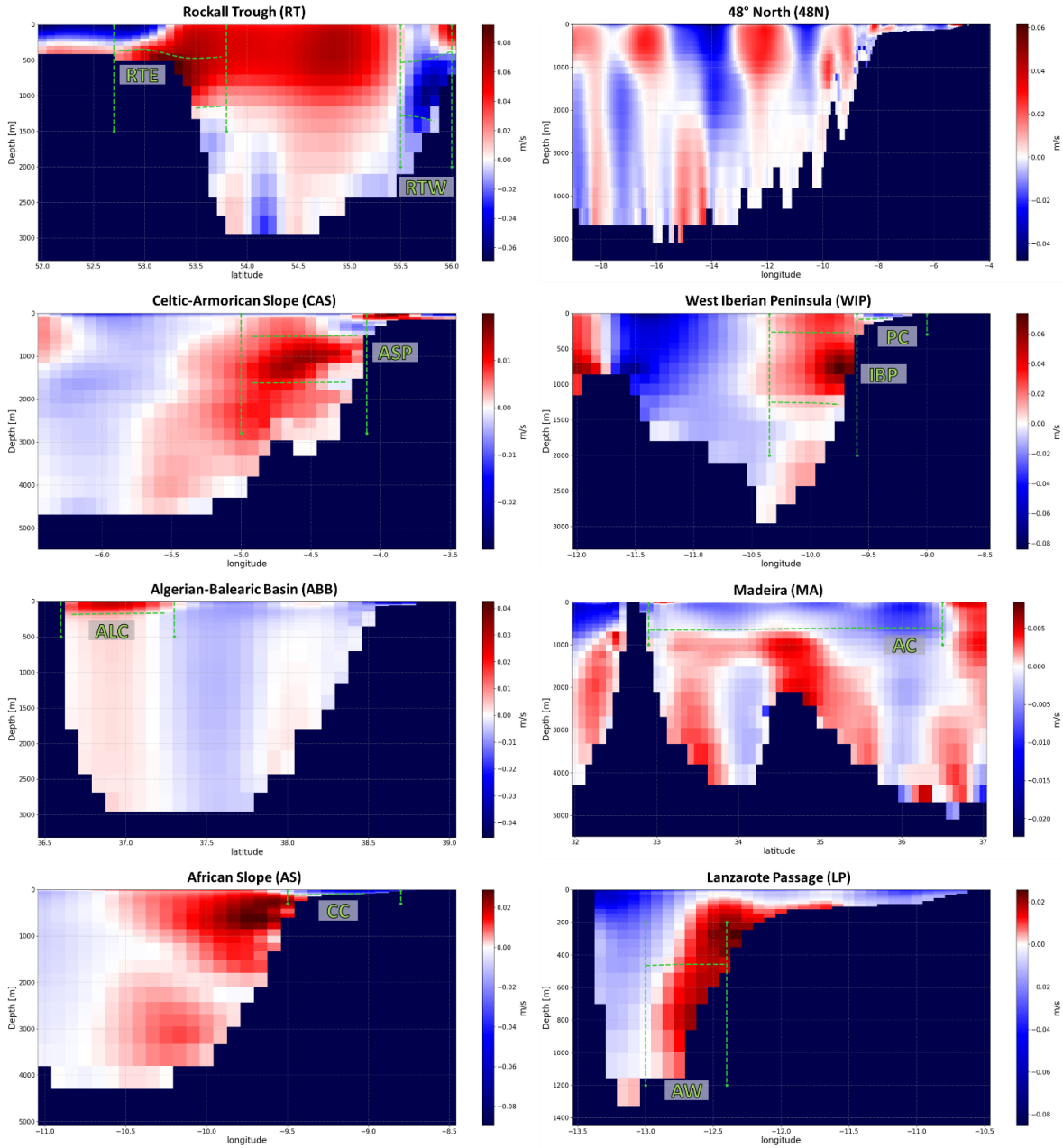
430 **Table 2: Description of the monitoring windows used to compute the ocean current OMI. Min/max values of latitude, longitude and density anomaly are detailed (sfc used for surface, sfl for seafloor).**



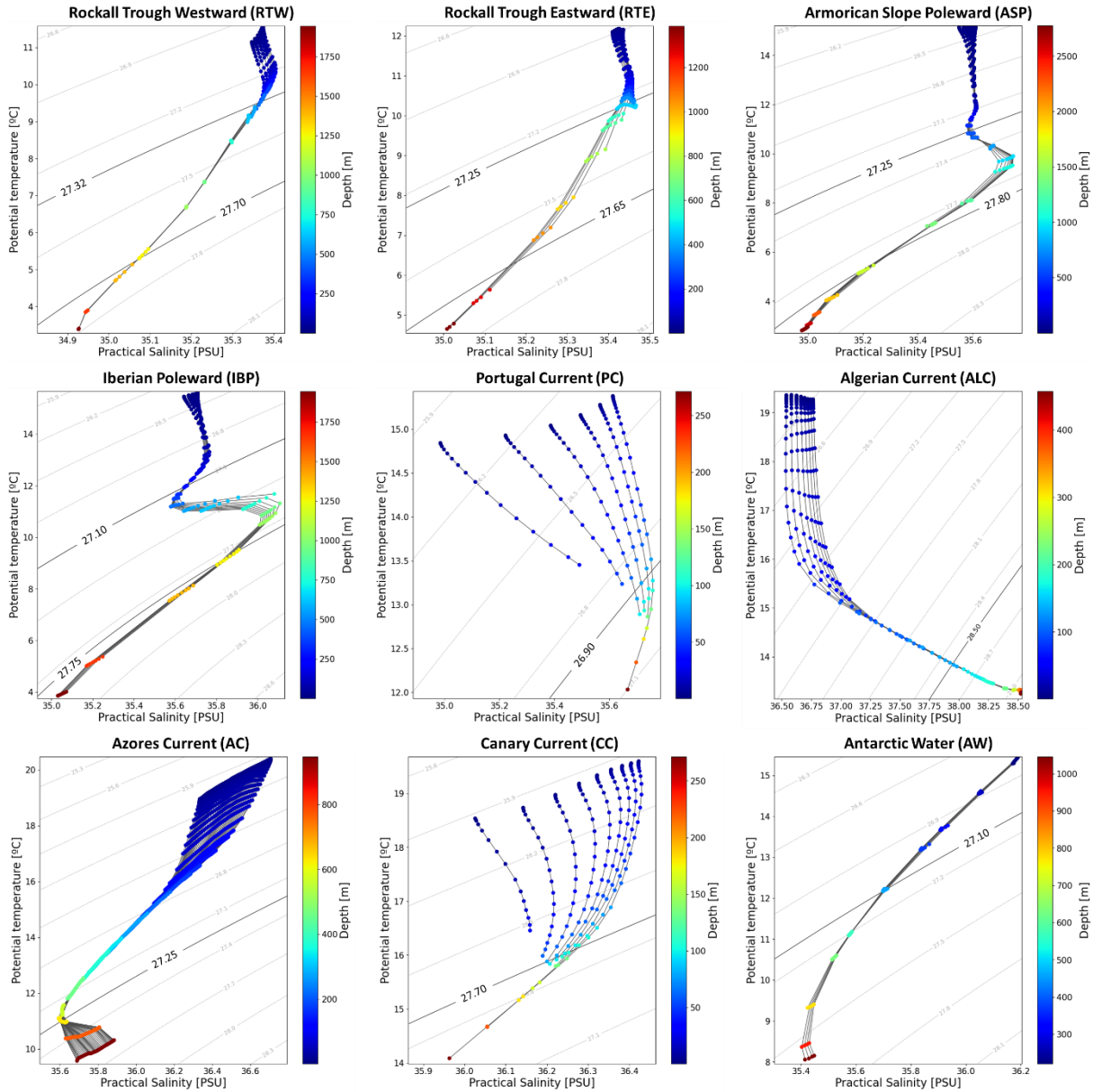
435 **Figure 1: Bathymetry of the IBI domain. Dotted red lines indicate the location and acronyms of the sections used to calculate the mean transverse velocity: RT (Rockall Trough), 48N (48 degrees North), CAS (Celtic-Armorican Slope), WIP (West Iberian Peninsula), ABB (Algerian-Balearic Basin), AS (African Slope), MA (Madeira), and LP (Lanzarote Passage). Arrows represent the currents monitored in each section, categorized by an arbitrary color scheme: Blue arrows indicate upper levels (0-500 meters), green arrows indicate intermediate depths (500-1500 meters), and red arrows indicate deep levels (>1500 meters).**

440

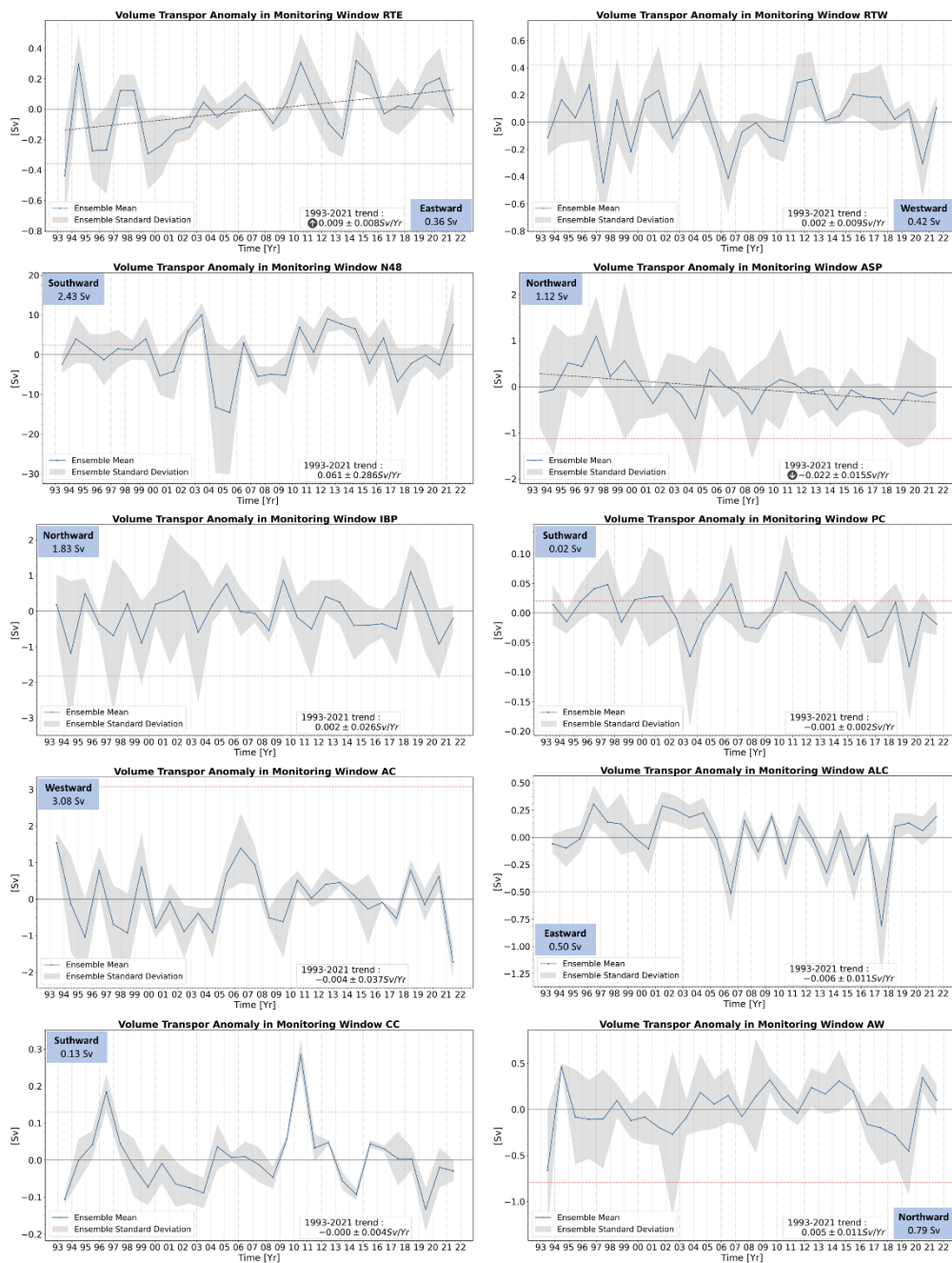




445 **Figure 2: Mean vertical sections of transverse velocity along the transects defined in Figure 1 computed from IBI-REA over the period 1993-2021. Green dashed lines correspond to the monitoring windows defined to describe the variability of the currents defined. RTW: Rockall Trough Westward, RTE: Rockall Trough Eastward, ASP: Armorian Slope Poleward, IBP: Iberian Poleward, PC: Portugal Current, ALC: Algerian Current, CC: Canary Current, AC: Azores Current and AW: Antarctic Water.**



**Figure 3: Averaged  $\theta/S$  diagrams computed on the monitoring sections using IBI-REA product data over the period 1993-2021. Traces correspond to each vertical profile included on the corresponding monitoring window. The diagrams include the anomaly of potential density field (shown as dotted grey lines), being the vertical boundaries of each monitoring section represented by the black continuous lines. The diagrams that have a single continuous line correspond to monitoring windows where one of their vertical levels is defined as surface or seafloor (see Table 2).**



460 **Figure 4: Annual anomalies of cross-section volume transport averaged in monitoring windows RTE, RTW, N48, ASP, IBP, PC,**  
**AC, ALC, CC, and AW. Time series computed and averaged from different Copernicus Marine products for each window (see**  
**Table 2) providing a multi-product result. The blue line represents the ensemble mean, and shaded grey areas represent the**  
**standard deviation of the ensemble. Blue boxes include the direction of the current and mean transport computed in the period**  
**1993-2021. Red dashed lines depict the velocity value at which the direction of the current reverses. This aligns with the average**  
**transport value (with sign reversed) and the point where absolute transport becomes zero. The analysis of trends (at 95%**  
465 **confidence interval) computed in the period 1993–2021 is included (bottom right box). Trend lines (gray dashed line) are only**  
**included in the figures when a significant trend is obtained.**

