

Sentinel3-OLCI Quality Index (QI)

$$QI = (\text{observation} - \text{climatological average}) / \text{climatological standard deviation}$$

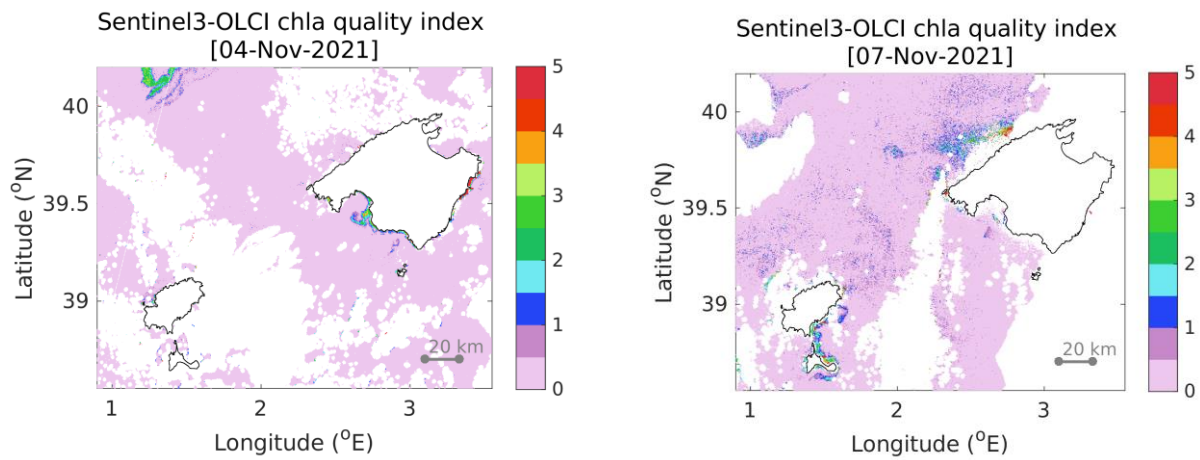


Figure R1: Quality Index (QI) of Sentinel3-OLCI chl-a images on (left) 4 and (right) 7 November 2021

Lagrangian analysis of surface transports from Alcudia Bay

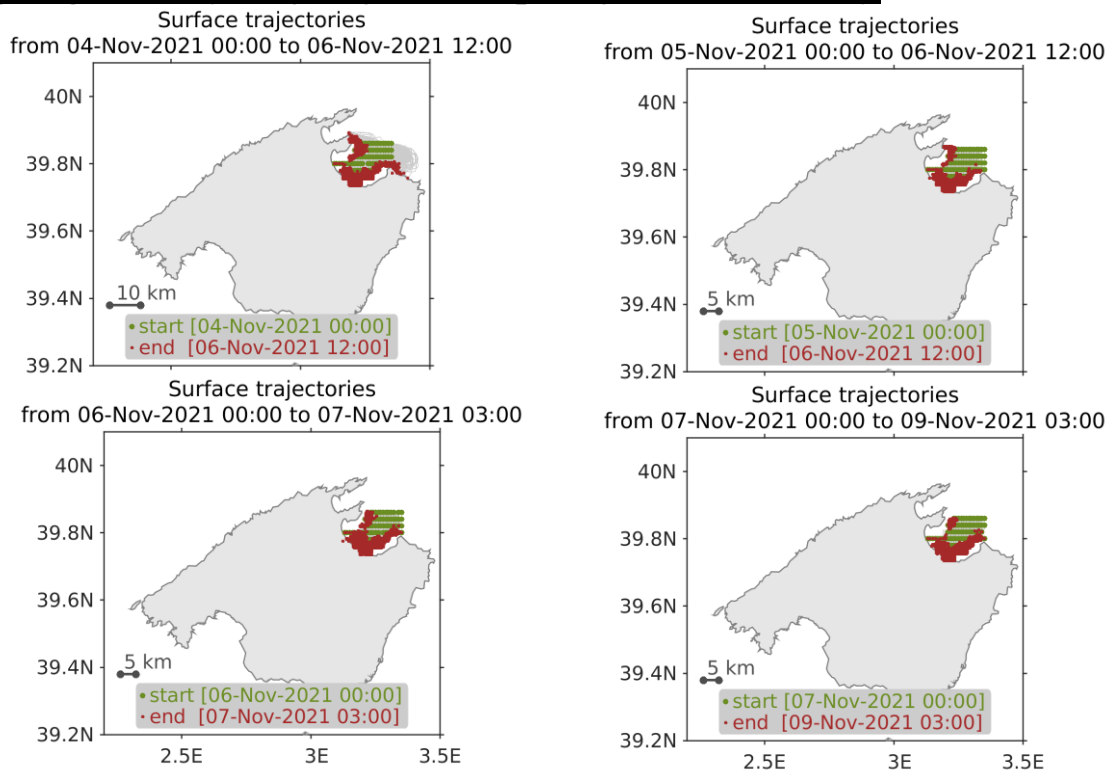


Figure R2: Surface trajectories of model particles seeded in Alcudia Bay on 4 (top-left), 5 (top-right), 6 (bottom-left) and 7 (bottom-right) November. The initial and final positions are represented by green and red dots, respectively.